



Welcome to the
2025 National Convention
of the
American Cichlid Association,
American Killifish Association,
American Livebearer
Association,
International Betta Congress,
and the
Federation of Texas Aquarium
Societies

June 12-15, 2025

Hosted by the
Hill Country Cichlid Club



Montanus Digital: 11 June 2025 11:20 PM

WELCOME TO TEXAS!

We have spent more than a year planning and organizing this event, and finally after literally thousands of emails and phone calls and meetings, the **Lone Star Cares Convention** is here!

This is a special event featuring the American Cichlid Association, the American Killifish Association, the American Livebearer Association, the International Betta Congress, Hill Country Cichlid Club and the Federation of Texas Aquarium Societies.

This is actually a first of its kind, a truly combined convention where all the organizations are under one roof. Its kind of amazing that hobbyists from all walks of life can get together and enjoy their passion for the hobby, regardless of the type of fish they prefer to keep in their aquariums.

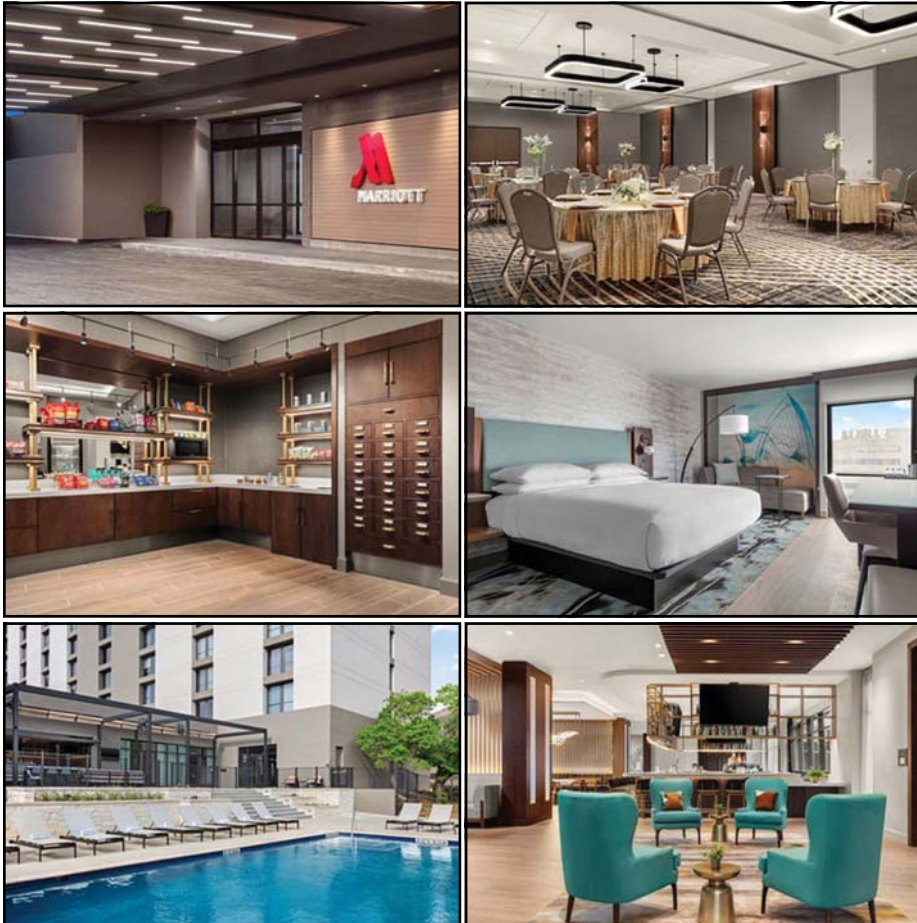
Acting as vice-Chairman for both the ACA and the ALA it is my pleasure to help coordinate this great event. Volunteers made this happen and I want to publicly thank everyone of you who have helped make it happen.

As questions arise, please just ask any of our volunteers; they can easily be recognized by the tan-colored staff shirt.

So, sit back and enjoy the speakers, the tours and the fellowship of our wonderful hobby!

Rusty Wessel

Lone Star CARES Convention Chair



2025 ACA, AKA, ALA, IBC National Convention

Gold Sponsors



Prestige Aquatics is a full aquatic services business in Paducah, Kentucky, USA. We are striving to be the aquatic fish industry leader in both livestock supply and aquarium services.

We are passionate about the fish keeping hobby because just like many of you, we have been hobbyists for most of our lives. Fish keeping is what we love to do!

Our mission is to provide high-quality, healthy, premium-grade fish directly to fish stores and home aquarium hobbyists, as well as equip them with the systems necessary for long-term success.

At Prestige Aquatics, we specialize in:

Rainbowfish – Plecos – Corydoras

Show-quality fancy guppies

Small South and Central American cichlids
and more!

Nearly every fish sold at Prestige Aquatics is bred and raised in-house at our Kentucky facility.

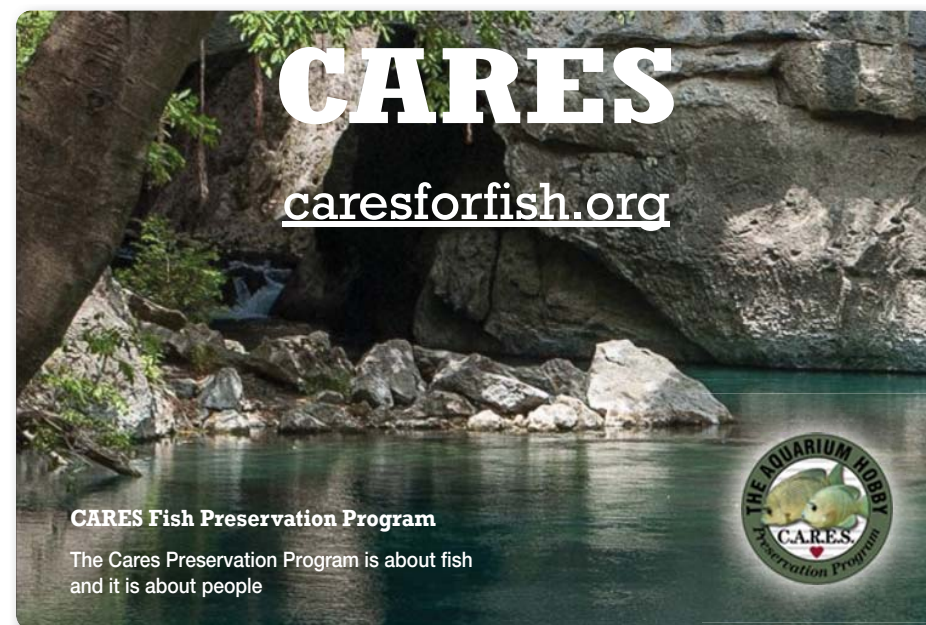
prestigeaquaticsfish.com

CONTACTS

Convention Chair	Rusty Wessel	rusty@wesselinsurance.com
ACA Chair	Jan Benes	benesjl@miamioh.edu
Advertising	Alan DeAngelo	alandeangelo@comcast.net
	Megan McGuire	megan1967@gmail.com
	Don Danko	dondanko03@gmail.com
AKA Chair	Art Parola	artparolalouisville@gmail.com
	Art Leuterman	leutail@swbell.net
	Patrick Miller	thriftyfisher@1791.com
ALA Chair	Patrick Miller	thriftyfisher@1791.com
Auction Chair ACA	Dave Shumacher	daves@davesfish.com
Auction Chair AKA	Dave Hemmerlein	pupfishmich6@gmail.com
Auction Chair ALA	Patrick Miller	thriftyfisher@1791.com
BABES Auction	Pam Marsh	pam@moonstone-studio.com
Bulletin Board	Dee Brown	ldbrown3138@yahoo.com
CARES Coordinator	Craig Storms	cstorms97@gmail.com
Donations Chair	Sue Benes	cichlidsue@yahoo.com
FOTAS Chair	Clay Trachtman	clay.trachtman@gmail.com
Hill Country Cichlid Club	Dave Shumacher	daves@davesfish.com
Hospitality room	Tim Stone	thepoultryfarm@yahoo.com
International Betta Conference	Gerald Griffin	herpchat@yahoo.com
Introductions MC	Chris Biggs	thebiggscrow@gmail.com
Jordan/Loiselle Donations	Stephan Tanner	swisstropicals@gmail.com
Kids Décor Contest	Jan Benes	benesjl@miamioh.edu
Killie Carnival	Dave Hemmerlein	pupfishmich6@gmail.com
Name Badges	Megan McGuire	megan1967@gmail.com
Photography	Mo Devlin	mo@modevlin.com
Program Booklet	Daryl Hutchins	daryl@cichlid.org
Raffle Tanks	Dee Brown	ldbrown3138@yahoo.com
Rare Goodeid Auction	Patrick Miller	thriftyfisher@1791.com
Registrations	Angie LaVoy	akl033@att.net
Set-Up/Tear-Down	Devin Espinoza	espinozadevin@rocketmail.com
	Dave Shumacher	daves@davesfish.com
	Mark Pyle	pyleaquatics@gmail.com
Sunday Auction	Dee Dee Ashworth	ashworthdd@gmail.com
Show Chair ALA	Curt Bitterling	cbitterl@yahoo.com
T-Shirts	Les Wilson	lwilson@cobaltinternational.com
Texas Cichlid Association	Marvin England	marvin5107@gmail.com
Tour Chair	Clay Trachtman	clay.trachtman@gmail.com
Vendor Chair	Clay Trachtman	clay.trachtman@gmail.com
Web Chair	Tim Hopkins	savrip@gmail.com
Wine/Beer Tasting Fundraiser	Rit Forcier	rit4cr@aol.com

Convention Registration includes exclusive access to the following:

- Entry to the main Fish Show with cichlids, livebearers, killifish and bettas from around the world;
- Vendor and Manufacturer Booths featuring display, sales and promotional items;
- Goodie bag stuffed with great manufacturer and vendor giveaways;
- Presentations on topics relating to cichlids, livebearers, killifish and bettas, including travel, collecting, keeping and breeding by experts in the hobby and industry;
- The big Sunday Swap Meet with Vendors and Hobbyists who will be offering fishes, plants, equipment and dry goods for sale;
- Club-sponsored Hospitality Suite on Thursday, Friday and Saturday evenings;
- Option to register for special side events, including Thursday Fish Farm Tour and Friday Texas Native Fish Collecting Trips including The Xiphophorus Stock Center – limited space available, so reserve early;
- Option to register to the Saturday evening Banquet featuring a humorous Keynote Presentation by Greg Steeves.





AREA 1 INTERNATIONAL SHOW CLASS LIST FOR 2024 - 2025

EFFECTIVE 1 August 2024

Discard all Previous Class Lists!

GROUP A: BREEDER

Variety A: Halfmoon – Longfin Singletail

- A1. Red STM
- A2. Black STM & Black Lace STM
- A3. Light Solid non-metallic STM yellow, cellophane, white, pastel, orange
- A4. Royal Blue STM
- A5. Steel Blue STM
- A6. Green/Turquoise STM
- A7. Dark & Light Body Metallic STM, All Solid Colors
- A8. Marble, Multicolor, Grizzled and Orchid STM
- A9. Butterfly STM
- A10. Dragon & Bicolor STM, Light Body BiColor with any colored fins
- A11. OCV STM (Area 6 Trial)
- A12. Non-iridescent Dark STF: red, black, black lace
- A13. Light Solid STF: yellow, cellophane, white, pastel, orange
- A14. Royal Blue STF
- A15. Steel Blue STF
- A16. Green/Turquoise STF
- A17. Metallic STF, All Solid light and dark colors
- A18. Marble, Multicolor, Grizzled, Orchid and all other patterns STF not listed elsewhere.
- A19. Bicolor & Dragon STF (Light body & dark body)
- A20. OCV STF (Area 6 Trial).

Variety B: Shortfin (Traditional & Show Plakats; and Symmetrical Shortfins)

- B1. Show Plakat STM Solid dark non-iridescent
- B2. Show Plakat STM Dark iridescent
- B3. Show Plakat STM Light non-metallic (see A3 above)

- B4. Show Plakat STM Metallic All Solid dark & light colors
- B5. Show Plakat STM Patterned: dark or light bodied incl. Pineapple, Grizzle, Orchid, Non-Marbled
- B6. Show Plakat STM Multicolor & Marble
- B7. Show Plakat STM Butterfly
- B8. Show Plakat STM Bicolor & Dragon (light body and dark body)
- B9. OCV Show Plakat STM (Area 6 Trial)
- B10. Traditional Plakat STM Solid Colors
- B11. Traditional Plakat STM Patterned (Includes OCV)
- B12. Symmetrical STM All colors (Includes OCV).
- B13. Sym. & Plakat STF Dark Solid color non-iridescent
- B14. Symmetrical and Show Plakat STF Dark Solid Irid.
- B15. Sym & Show Plakat STF Metallic Solid dark & light
- B16. Sym & Show Plakat STF Light Solid non-metallic: (yellow, cellophane, white, pastel, orange)
- B17. Symmetrical & Show Plakat Patterned STF Includes all patterns and OCV.

Variety C: Other Recognized Forms

- C1. Crowntail HM STM, All colors (Includes OCV)
- C2. Doubletail Male – All types, All colors (Includes OCV)
- C3. Veiltail STM – All Colors (Includes OCV)
- C4. Crowntail Plakat STM, All Colors (Includes OCV)
- C5. Large Pectorals All longfin and shortfin STM
- C6. Crowntail HM STF All colors (Includes OCV)
- C7. Doubletail Females All types, All colors (Includes OCV)
- C8. Veiltail STF, All Colors (Includes OCV)
- C9. Large Pectoral All longfin and shortfin STF
- C10. Crowntail Plakat STF, All Colors (Includes OCV)
- C11. Giant Plakat Male & Female (Includes OCV)
(Males: Minimum body size 6.0 cm tip of nose to peduncle; female 5.0 cm min, nose to peduncle).

Variety D: Breeders Division: Variety D now earns its own BOV instead of moving to appropriate Var. A, B, C for BOV.

- D1. Color or Form Variations Male, incl. other colors and other fin types like deltas, roundtails, rosetails, HM greater than 195 o, etc. Must Label Variation
 - D2. Color or Form Variations Female, incl. other colors and other fin types like deltas, roundtails, rosetails, HM greater than 195 o, etc. Must Label Variation
- D1 and D2 Must label with clear description of variation. Do NOT use abbreviations or trade names.
- D3. Form and Fintage Male
 - D4. Form and Fintage Female
- D3 & D4 Form and Fintage allows all forms, HM, PK, VT, CT, DT. Judged by standards of that form



- D5. Pairs Longfin Halfmoon, VT, CT, DT, LP, etc. D6. Pairs – Shortfin and any mid length fin
D5 & D6 Pairs: Aliens and hybrids may be shown but are not eligible for BOV or BOS & must be labelled as noted in D7.
D7. Hybrids & Aliens male & female – NOT Eligible for BOV or BOS Describe & label intent, list species of hybrid.

Variety E: Wild Type Bettas – Not Eligible for BOS/RBOS Select one pair or trio from E1, E2 or single from E3 for Best of Variety and one for Reserve Best of Variety. These receive points toward an end of year Wild Type award and Area Championship All entries MUST LABEL species.

- E1. Bubblebuster Pairs or Trios, Large & Small
E2. Mouthbrooder Pairs or Trios, Large & Small
E1 & E2. (Trios must label sex. Trios are not awarded extra points)
E3. Single Entry Bubblebustlers or Mouthbrooders –
Singles may be divided as Bubblebuster/ Mouthbrooder.
Wild Pairs that have one fish die before judging may be placed in E3.

GROUP B: NEW BREEDER

- NB 1. HM STM All Colors and Patterns
NB 2. Plakat/Shortfin All Colors and Patterns
NB 3. DTM, All types, All Colors and Patterns
NB 4. CT, LP All Colors and Patterns
NB 5. VT STM, All Colors and Patterns
NB 6. HM STF All Colors and Patterns
NB 7. Plakat & Symmetrical STF
NB 8. All other females, CT, VT, DT, LP, All colors
NB 9. Any other type: giant, Variations, etc. Male & Fem Variations MUST LABEL color or form variation
NB10. Hybrid, Aliens and Wild Types; All Hybrid and Wild Type entries MUST LABEL SPECIES.

GROUP C: COLLECTOR

(Purchased by entrant, Given to entrant; or Caught wild by entrant)

Note: GloFish® fluorescent ornamental are illegal in all shows and will be automatically disqualified!

- CC1. HM STM All Colors and Patterns
CC2. Plakat/Shortfin All Colors and Patterns
CC3. DTM, All types, All colors and Patterns
CC4. CT or VT or LP STM – All colors and Patterns
CC5. HM STF All Colors and Patterns
CC6. Plakat & Symmetrical STF All Colors and Patterns
CC7. DTF All Colors and Patterns

- CC8. All other females CT, VT, DT, LP, All Colors and Patterns
CC9. Any other type: Giant, etc. Male & Female. All Variations MUST LABEL color or form variation.
CC10. Hybrid, Aliens and Wild Types; All Hybrid and Wild Type entries MUST LABEL SPECIES.

ARTS AND CRAFTS

- AC1. Photography
AC2. Illustrations
AC3. Crafts.

OPTIONAL CLASSES

- Juvenile Betta Classes - Self-Bred Minimum 1.25 cm body up to 2.8 cm body for females and 3.0 cm body for males up to 3.25 CM MAX.
JB1. Halfmoon STM, all colors/patterns
JB2. Other Longfin Males, all colors/patterns – Doubletail, Crowntail, Veiltail, Large Pectorals
JB3. All Short-finned Males, all colors & patterns. Show, traditional, and symmetrical plakat, CTPK, DTPK, LPPK & Junior Giants. Junior Giant Min. size 5.0 cm to Max. 5.9 cm tip of mouth to peduncle
JB4. All Females; Junior Giant females up to 3.25 cm.
Entrant must list tail type on entry form & label.

Abbreviations:

SF	Short fin	CT	Crowntail
STF	Singletail Female	DT	Doubletail
STM	Singletail Male	HM	Halfmoon
SYM	Symmetrical	LP	Large Pectora
VT	Veiltail	PK	Plakat
WT	Wild Types	BOV	Best of Variety
RBOV	Reserve Best of Variety	BOS	BOS Best of Show
RBOS	Reserve Best of Show	OCV	Other Color Variety

58 Group A Classes (Breeder – Self-Bred)

10 Group B Classes (New Breeder – Self-Bred)

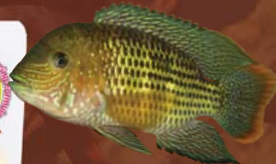
10 Group C Classes (Collector)

4 Optional Junior Classes (Self-Bred)

3 Art Classes.



CICHLIDS ADORE!



Our Most Economical,
Daily Growth Diet
Offering a Balanced
Nutrient Profile For All
Cichlids & Larger
Tropical Fish.



Our Most Economical
Color-Enhancing, Daily
Diet Offering a Highly
Balanced Nutrient
profile. Available in a
Floating or Sinking
Formula.



The World's Most Advanced Diet For Cichlids
and Larger Carnivorous Fish Containing
©Hikari Germ™ Our Proprietary Probiotic.



Helps Maintain Excellent Water!
The World's First "Full-Function" Water
Conditioner! Everything In One Bottle.

hikariusa.com fish@hikariusa.com (800) 621-5619

[f](#) [t](#) [i](#) [n](#) [s](#) [t](#) [g](#) [r](#) [a](#) [m](#) [i](#) [n](#) [g](#) [h](#) [i](#) [k](#) [a](#) [r](#) [i](#) [u](#) [s](#) [a](#) [c](#) [o](#) [m](#) [i](#) [n](#) [g](#) [h](#) [i](#) [k](#) [a](#) [r](#) [i](#) [u](#) [s](#) [a](#) [c](#) [o](#) [m](#) [i](#) [n](#) [g](#) [h](#) [i](#) [k](#) [a](#) [r](#) [i](#) [u](#) [s](#) [a](#) [c](#) [o](#) [m](#) [i](#) [n](#) [g](#) [h](#) [i](#) [k](#) [a](#) [r](#) [i](#) [u](#) [s](#) [a](#) [c](#) [o](#) [m](#) [i](#) [n](#) [g](#) [h](#) [i](#) [k](#) [a](#) [r](#) [i](#) [u](#) [s](#) [a](#) [c](#) [o](#) [m](#) [i](#) [n](#) [g](#) [h](#) [i](#) [k](#) [a](#) [r](#) [i](#) [u](#) [s](#) [a](#) [c](#) [o](#) [m](#) [i](#) [n](#) [g](#) [h](#) [i](#) [k](#) [a](#) [r](#) [i](#) [u](#) [s](#) [a](#) [c](#) [o](#) [m](#) [i](#) [n](#) [g](#) [h](#) [i](#) [k](#) [a](#) [r](#) [i](#) [u](#) [s](#) [a](#) [c](#) [o](#) [m](#) [i](#) [n](#) [g](#) [h](#) [i](#) [k](#) [a](#) [r](#) [i](#) [u](#) [s](#) [a](#) [c](#) [o](#) [m](#) [i](#) [n](#) [g](#) [h](#) [i](#) [k](#) [a](#) [r](#) [i](#) [u](#) [s](#) [a](#) [c](#) [o](#) [m](#) [i](#) [n](#) [g](#) [h](#) [i](#) [k](#) [a](#) [r](#) [i](#) [u](#) [s](#) [a](#) [c](#) [o](#) [m](#) [i](#) [n](#) [g](#) [h](#) [i](#) [k](#) [a](#) [r](#) [i](#) [u](#) [s](#) [a](#) [c](#) [o](#) [m](#) [i](#) [n](#) [g](#) [h](#) [i](#) [k](#) [a](#) [r](#) [i](#) [u](#) [s](#) [a](#) [c](#) [o](#) [m](#) [i](#) [n](#) [g](#) [h](#) [i](#) [k](#) [a](#) [r](#) [i](#) [u](#) [s](#) [a](#) [c](#) [o](#) [m](#) [i](#) [n](#) [g](#) [h](#) [i](#) [k](#) [a](#) [r](#) [i](#) [u](#) [s](#) [a](#) [c](#) [o](#) [m](#) [i](#) [n](#) [g](#) [h](#) [i](#) [k](#) [a](#) [r](#) [i](#) [u](#) [s](#) [a](#) [c](#) [o](#) [m](#) [i](#) [n](#) [g](#) [h](#) [i](#) [k](#) [a](#) [r](#) [i](#) [u](#) [s](#) [a](#) [c](#) [o](#) [m](#) [i](#) [n](#) [g](#) [h](#) [i](#) [k](#) [a](#) [r](#) [i](#) [u](#) [s](#) [a](#) [c](#) [o](#) [m](#) [i](#) [n](#) [g](#) [h](#) [i](#) [k](#) [a](#) [r](#) [i](#) [u](#) [s](#) [a](#) [c](#) [o](#) [m](#) [i](#) [n](#) [g](#) [h](#) [i](#) [k](#) [a](#) [r](#) [i](#) [u](#) [s](#) [a](#) [c](#) [o](#) [m](#) [i](#) [n](#) [g](#) [h](#) [i](#) [k](#) [a](#) [r](#) [i](#) [u](#) [s](#) [a](#) [c](#) [o](#) [m](#) [i](#) [n](#) [g](#) [h](#) [i](#) [k](#) [a](#) [r](#) [i](#) [u](#) [s](#) [a](#) [c](#) [o](#) [m](#) [i](#) [n](#) [g](#) [h](#) [i](#) [k](#) [a](#) [r](#) [i](#) [u](#) [s](#) [a](#) [c](#) [o](#) [m](#) [i](#) [n](#) [g](#) [h](#) [i](#) [k](#) [a](#) [r](#) [i](#) [u](#) [s](#) [a](#) [c](#) [o](#) [m](#) [i](#) [n](#) [g](#) [h](#) [i](#) [k](#) [a](#) [r](#) [i](#) [u](#) [s](#) [a](#) [c](#) [o](#) [m](#) [i](#) [n](#) [g](#) [h](#) [i](#) [k](#) [a](#) [r](#) [i](#) [u](#) [s](#) [a](#) [c](#) [o](#) [m](#) [i](#) [n](#) [g](#) [h](#) [i](#) [k](#) [a](#) [r](#) [i](#) [u](#) [s](#) [a](#) [c](#) [o](#) [m](#) [i](#) [n](#) [g](#) [h](#) [i](#) [k](#) [a](#) [r](#) [i](#) [u](#) [s](#) [a](#) [c](#) [o](#) [m](#) [i](#) [n](#) [g](#) [h](#) [i](#) [k](#) [a](#) [r](#) [i](#) [u](#) [s](#) [a](#) [c](#) [o](#) [m](#) [i](#) [n](#) [g](#) [h](#) [i](#) [k](#) [a](#) [r](#) [i](#) [u](#) [s](#) [a](#) [c](#) [o](#) [m](#) [i](#) [n](#) [g](#) [h](#) [i](#) [k](#) [a](#) [r](#) [i](#) [u](#) [s](#) [a](#) [c](#) [o](#) [m](#) [i](#) [n](#) [g](#) [h](#) [i](#) [k](#) [a](#) [r](#) [i](#) [u](#) [s](#) [a](#) [c](#) [o](#) [m](#) [i](#) [n](#) [g](#) [h](#) [i](#) [k](#) [a](#) [r](#) [i](#) [u](#) [s](#) [a](#) [c](#) [o](#) [m](#) [i](#) [n](#) [g](#) [h](#) [i](#) [k](#) [a](#) [r](#) [i](#) [u](#) [s](#) [a](#) [c](#) [o](#) [m](#) [i](#) [n](#) [g](#) [h](#) [i](#) [k](#) [a](#) [r](#) [i](#) [u](#) [s](#) [a](#) [c](#) [o](#) [m](#) [i](#) [n](#) [g](#) [h](#) [i](#) [k](#) [a](#) [r](#) [i](#) [u](#) [s](#) [a](#) [c](#) [o](#) [m](#) [i](#) [n](#) [g](#) [h](#) [i](#) [k](#) [a](#) [r](#) [i](#) [u](#) [s](#) [a](#) [c](#) [o](#) [m](#) [i](#) [n](#) [g](#) [h](#) [i](#) [k](#) [a](#) [r](#) [i](#) [u](#) [s](#) [a](#) [c](#) [o](#) [m](#) [i](#) [n](#) [g](#) [h](#) [i](#) [k](#) [a](#) [r](#) [i](#) [u](#) [s](#) [a](#) [c](#) [o](#) [m](#) [i](#) [n](#) [g](#) [h](#) [i](#) [k](#) [a](#) [r](#) [i](#) [u](#) [s](#) [a](#) [c](#) [o](#) [m](#) [i](#) [n](#) [g](#) [h](#) [i](#) [k](#) [a](#) [r](#) [i](#) [u](#) [s](#) [a](#) [c](#) [o](#) [m](#) [i](#) [n](#) [g](#) [h](#) [i](#) [k](#) [a](#) [r](#) [i](#) [u](#) [s](#) [a](#) [c](#) [o](#) [m](#) [i](#) [n](#) [g](#) [h](#) [i](#) [k](#) [a](#) [r](#) [i](#) [u](#) [s](#) [a](#) [c](#) [o](#) [m](#) [i](#) [n](#) [g](#) [h](#) [i](#) [k](#) [a](#) [r](#) [i](#) [u](#) [s](#) [a](#) [c](#) [o](#) [m](#) [i](#) [n](#) [g](#) [h](#) [i](#) [k](#) [a](#) [r](#) [i](#) [u](#) [s](#) [a](#) [c](#) [o](#) [m](#) [i](#) [n](#) [g](#) [h](#) [i](#) [k](#) [a](#) [r](#) [i](#) [u](#) [s](#) [a](#) [c](#) [o](#) [m](#) [i](#) [n](#) [g](#) [h](#) [i](#) [k](#) [a](#) [r](#) [i](#) [u](#) [s](#) [a](#) [c](#) [o](#) [m](#) [i](#) [n](#) [g](#) [h](#) [i](#) [k](#) [a](#) [r](#) [i](#) [u](#) [s](#) [a](#) [c](#) [o](#) [m](#) [i](#) [n](#) [g](#) [h](#) [i](#) [k](#) [a](#) [r](#) [i](#) [u](#) [s](#) [a](#) [c](#) [o](#) [m](#) [i](#) [n](#) [g](#) [h](#) [i](#) [k](#) [a](#) [r](#) [i](#) [u](#) [s](#) [a](#) [c](#) [o](#) [m](#) [i](#) [n](#) [g](#) [h](#) [i](#) [k](#) [a](#) [r](#) [i](#) [u](#) [s](#) [a](#) [c](#) [o](#) [m](#) [i](#) [n](#) [g](#) [h](#) [i](#) [k](#) [a](#) [r](#) [i](#) [u](#) [s](#) [a](#) [c](#) [o](#) [m](#) [i](#) [n](#) [g](#) [h](#) [i](#) [k](#) [a](#) [r](#) [i](#) [u](#) [s](#) [a](#) [c](#) [o](#) [m](#) [i](#) [n](#) [g](#) [h](#) [i](#) [k](#) [a](#) [r](#) [i](#) [u](#) [s](#) [a](#) [c](#) [o](#) [m](#) [i](#) [n](#) [g](#) [h](#) [i](#) [k](#) [a](#) [r](#) [i](#) [u](#) [s](#) [a](#) [c](#) [o](#) [m](#) [i](#) [n](#) [g](#) [h](#) [i](#) [k](#) [a](#) [r](#) [i](#) [u](#) [s](#) [a](#) [c](#) [o](#) [m](#) [i](#) [n](#) [g](#) [h](#) [i](#) [k](#) [a](#) [r](#) [i](#) [u](#) [s](#) [a](#) [c](#) [o](#) [m](#) [i](#) [n](#) [g](#) [h](#) [i](#) [k](#) [a](#) [r](#) [i](#) [u](#) [s](#) [a](#) [c](#) [o](#) [m](#) [i](#) [n](#) [g](#) [h](#) [i](#) [k](#) [a](#) [r](#) [i](#) [u](#) [s](#) [a](#) [c](#) [o](#) [m](#) [i](#) [n](#) [g](#) [h](#) [i](#) [k](#) [a](#) [r](#) [i](#) [u](#) [s](#) [a](#) [c](#) [o](#) [m](#) [i](#) [n](#) [g](#) [h](#) [i](#) [k](#) [a](#) [r](#) [i](#) [u](#) [s](#) [a](#) [c](#) [o](#) [m](#) [i](#) [n](#) [g](#) [h](#) [i](#) [k](#) [a](#) [r](#) [i](#) [u](#) [s](#) [a](#) [c](#) [o](#) [m](#) [i](#) [n](#) [g](#) [h](#) [i](#) [k](#) [a](#) [r](#) [i](#) [u](#) [s](#) [a](#) [c](#) [o](#) [m](#) [i](#) [n](#) [g](#) [h](#) [i](#) [k](#) [a](#) [r](#) [i](#) [u](#) [s](#) [a](#) [c](#) [o](#) [m](#) [i](#) [n](#) [g](#) [h](#) [i](#) [k](#) [a](#) [r](#) [i](#) [u](#) [s](#) [a](#) [c](#) [o](#) [m](#) [i](#) [n](#) [g](#) [h](#) [i](#) [k](#) [a](#) [r](#) [i](#) [u](#) [s](#) [a](#) [c](#) [o](#) [m](#) [i](#) [n](#) [g](#) [h](#) [i](#) [k](#) [a](#) [r](#) [i](#) [u](#) [s](#) [a](#) [c](#) [o](#) [m](#) [i](#) [n](#) [g](#) [h](#) [i](#) [k](#) [a](#) [r](#) [i](#) [u](#) [s](#) [a](#) [c](#) [o](#) [m](#) [i](#) [n](#) [g](#) [h](#) [i](#) [k](#) [a](#) [r](#) [i](#) [u](#) [s](#) [a](#) [c](#) [o](#) [m](#) [i](#) [n](#) [g](#) [h](#) [i](#) [k](#) [a](#) [r](#) [i](#) [u](#) [s](#) [a](#) [c](#) [o](#) [m](#) [i](#) [n](#) [g](#) [h](#) [i](#) [k](#) [a](#) [r](#) [i](#) [u](#) [s](#) [a](#) [c](#) [o](#) [m](#) [i](#) [n](#) [g](#) [h](#) [i](#) [k](#) [a](#) [r](#) [i](#) [u](#) [s](#) [a](#) [c](#) [o](#) [m](#) [i](#) [n](#) [g](#) [h](#) [i](#) [k](#) [a](#) [r](#) [i](#) [u](#) [s](#) [a](#) [c](#) [o](#) [m](#) [i](#) [n](#) [g](#) [h](#) [i](#) [k](#) [a](#) [r](#) [i](#) [u](#) [s](#) [a](#) [c](#) [o](#) [m](#) [i](#) [n](#) [g](#) [h](#) [i](#) [k](#) [a](#) [r](#) [i](#) [u](#) [s](#) [a](#) [c](#) [o](#) [m](#) [i](#) [n](#) [g](#) [h](#) [i](#) [k](#) [a](#) [r](#) [i](#) [u](#) [s](#) [a](#) [c](#) [o](#) [m](#) [i](#) [n](#) [g](#) [h](#) [i](#) [k](#) [a](#) [r](#) [i](#) [u](#) [s](#) [a](#) [c](#) [o](#) [m](#) [i](#) [n](#) [g](#) [h](#) [i](#) [k](#) [a](#) [r](#) [i](#) [u](#) [s](#) [a](#) [c](#) [o](#) [m](#) [i](#) [n](#) [g](#) [h](#) [i](#) [k](#) [a](#) [r](#) [i](#) [u](#) [s](#) [a](#) [c](#) [o](#) [m](#) [i](#) [n](#) [g](#) [h](#) [i](#) [k](#) [a](#) [r](#) [i](#) [u](#) [s](#) [a](#) [c](#) [o](#) [m](#) [i](#) [n](#) [g](#) [h](#) [i](#) [k](#) [a](#) [r](#) [i](#) [u](#) [s](#) [a](#) [c](#) [o](#) [m](#) [i](#) [n](#) [g](#) [h](#) [i](#) [k](#) [a](#) [r](#) [i](#) [u](#) [s](#) [a](#) [c](#) [o](#) [m](#) [i](#) [n](#) [g](#) [h](#) [i](#) [k](#) [a](#) [r](#) [i](#) [u](#) [s](#) [a](#) [c](#) [o](#) [m](#) [i](#) [n](#) [g](#) [h](#) [i](#) [k](#) [a](#) [r](#) [i](#) [u](#) [s](#) [a](#) [c](#) [o](#) [m](#) [i](#) [n](#) [g](#) [h](#) [i](#) [k](#) [a](#) [r](#) [i](#) [u](#) [s](#) [a](#) [c](#) [o](#) [m](#) [i](#) [n](#) [g](#) [h](#) [i](#) [k](#) [a](#) [r](#) [i](#) [u](#) [s](#) [a](#) [c](#) [o](#) [m](#) [i](#) [n](#) [g](#) [h](#) [i](#) [k](#) [a](#) [r](#) [i](#) [u](#) [s](#) [a](#) [c](#) [o](#) [m](#) [i](#) [n](#) [g](#) [h](#) [i](#) [k](#) [a](#) [r](#) [i](#) [u](#) [s](#) [a](#) [c](#) [o](#) [m](#) [i](#) [n](#) [g](#) [h](#) [i](#) [k](#) [a](#) [r](#) [i](#) [u](#) [s](#) [a](#) [c](#) [o](#) [m](#) [i](#) [n](#) [g](#) [h](#) [i](#) [k](#) [a](#) [r](#) [i](#) [u](#) [s](#) [a](#) [c](#) [o](#) [m](#) [i](#) [n](#) [g](#) [h](#) [i](#) [k](#) [a](#) [r](#) [i](#) [u](#) [s](#) [a](#) [c](#) [o](#) [m](#) [i](#) [n](#) [g](#) [h](#) [i](#) [k](#) [a](#) [r](#) [i](#) [u](#) [s](#) [a](#) [c](#) [o](#) [m](#) [i](#) [n](#) [g](#) [h](#) [i](#) [k](#) [a](#) [r](#) [i](#) [u](#) [s](#) [a](#) [c](#) [o](#) [m](#) [i](#) [n](#) [g](#) [h](#) [i](#) [k](#) [a](#) [r](#) [i](#) [u](#) [s](#) [a](#) [c](#) [o](#) [m](#) [i](#) [n](#) [g](#) [h](#) [i](#) [k](#) [a](#) [r](#) [i](#) [u](#) [s](#) [a](#) [c](#) [o](#) [m](#) [i](#) [n](#) [g](#) [h](#) [i](#) [k](#) [a](#) [r](#)



**UPSTATE NEW YORK
KILLIFISH ASSOCIATION
WISHES ALL THE BEST TO THE
2025
JOINT ALA/AKA/ACA/IBC
CONVENTION IN SAN ANTONIO**



ARK



ARK

The **Arizona Rivulin Keepers** (ARK) is an aquarium club specializing in the keeping and breeding of killifish. ARK was organized on September 12, 1998, and began officially meeting in January 1999. Since that initial meeting, the Arizona Rivulin Keepers have met every month (except when restricted by Covid). Each meeting features a raffle, followed by a program about killifish or fish-keeping, and a Trade Table whereby members can exchange or acquire killies, other aquarium fishes, and aquarium-related items. ARK is an affiliate club of the American Killifish Association (AKA). See aka.org/!area_Affiliates/ark.

Since 1999, ARK has sponsored the Southwest Aquarium Keepers Event (SAKE) which is a FREE conference open to the public. SAKE features multiple aquarium-related programs, a gigantic raffle, and both a silent and a general auction.



A program at SAKE.



The raffle at SAKE.



The silent and regular auctions at SAKE.

ACA, AKA, ALA, FOTAS, IBC 2025 National Convention Schedule

Wednesday

8:00 am-5:00 pm Show Room and Rental Room setup.

Thursday

8:00 am-4:00 pm **Goliad Farms** – (limit 56).
9:00 am-5:00 pm Show, Rental and Vendor rooms open. BABES Table.
5:00 pm-8:00 pm Registration Open.
6:30 pm-9:00 pm KICK Room.
7:00 pm-8:00 pm **Mark Pyle** – *Building a better grow-out system.*
8:00 pm-9:00 pm **Gerald Griffin** – *Wild Betta Species*
– *Overview of the New Wild Betta Standard.*
9:00 pm-10:30 pm **Juan Miguel Artigas Azas** – *Swordtails of the Panuco.*
8:00 pm-12:00 pm Hospitality Suite open (by Texas Cichlid Association).



Friday

7:30 am-2:00 pm **San Marcos Collecting and Xiphophorus Stock Center Tour.**
9:00 am-5:00 pm Show Room and Vendor Room open. BABES Table.
9:00 am-5:00 pm Registration open.
9:00 am-5:00 pm ALA-AKA-Betta SILENT Auction.
10:00 am-9:00 pm KICK Room.
1:00 pm-2:00 pm ALA-AKA-Betta Board Meeting.
2:30 pm-3:30 pm **Jose Gonzalez** – *Catching up with Madagascar Cichlids.*
3:30 pm-4:30 pm **Devin Espinoza** – *The Wonderful World of Nothobranchius.*
4:30 pm-5:30 pm **Markita Savage** – *Xiphophorus Genetic Stock Center.*
7:00 pm-8:30 pm Rare Goodeid Auction to support ALA.
8:30 pm-10:00 pm Hospitality Suite Open
8:30 pm KICK Auction (kids only).
9:00 pm ALA – AKA – Betta Show Entry Deadline.
10:00 pm-Late ACA BABES AUCTION.



Saturday

7:00 am-9:00 am Show Judging ALA – AKA – Betta.
9:00 am-5:00 pm Show Room and Vendor Room open. BABES Table.
9:00 am-10:00 am **Charles Clapsaddle** – *Breeding Systems (for maintaining species/varieties, improving and developing new varieties).*
10:00 am-11:30 am **Juan Miguel Artigas Azas** – *Rheophilous Cichlids from North America.*
10:00 am-9:00 pm KICK Room.
11:30 am-1:00 pm Swap Meet and Killie Carnival.
12:00 Noon CARES Pledge Fish Giveaway.
12:00 pm-1:30 pm Kids Decorating Contest, sponsored by **Aqueon** and **Finspiration Aquatics** (limited to 15 entries).
1:00 pm-2:00 pm **Ad Konings** – *(50 Years) Chasing Cichlids in Their Natural Habitat!*
2:00 pm-3:00 pm **Dr Roger Brousseau** – *Keeping and Raising South American Annual Killifish.*
3:00 pm-4:00 pm **Chris Horsfall** – *Sustain Nkondwe Island, Lake Tanganyika.*
4:00 pm-5:00 pm ALA Graduate Student Poster Presentations – **Maria Elizabeth D'Amico** and **Alanna Fulkerson.**
4:30 pm-7:30 pm Mechanical Bull Rides.
5:00 pm-6:30 pm Wine/Beer Tasting Fundraiser.
6:00 pm-7:00 pm Paul Loiselle Memorial Hour.
6:30 pm-7:30 pm Reception Bar.
7:30 pm-8:30 pm Combined Banquet (ACA, AKA, ALA, IBC and FOTAS).
8:25 pm Conservation Update (Project Piaba) – **Kapil Mandrekar.**
8:30 pm-9:30 pm Banquet Speaker – **Greg Steeves.**
9:30 pm-Midnight Hospitality Suite open (by Texas Cichlid Association) and Fish/Vendor Room open (show fish can be removed).



Sunday

8:00 am-10:00 am Tear-down Fish Show.
8:00 am-10:00 am Show Award Presentations.
10:00 am-End ACA-AKA-ALA-IBC auction.



WFT

WILD FISH TANKS

- TROPICAL FISH
- NATIVE FISH
- WILD TYPE LIVEBEARERS
- PHOTO TANKS
- BREEDING CAVES & SUPPLIES



WILDFISHTANKS.COM

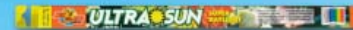


Get CATFISHED!

T8 SIZES



Flora Sun® T8 Max Plant Growth
Available in 18, 24, 36 and 48 inch sizes

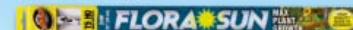


Ultra Sun® T8 Super Daylight
Available in 18, 24, 36 and 48 inch sizes



Tropic Sun® T8 5500K Daylight
Available in 18, 24, 36 and 48 inch sizes

T5 HO SIZES



Flora Sun® T5 HO Max Plant Growth
Available in 22, 34 and 46 inch sizes



Ultra Sun® T5 HO Super Daylight
Available in 22, 34 and 46 inch sizes



Ultra Sun®
T5 HO
Super
Daylight
Mini
Compact
Fluorescent
ITEM# UL-CF1



Floating Fish
Food Clip
ITEM# FFC-10



Pleco Banquet Block
ITEM# BB-8



Low Boy® 50 Gallon
Breeder Flat Aquarium
ITEM# BFT-50



Ceramic Catfish Log
ITEM# FA-S1



zoomed.com



2025 ACA, AKA, ALA, FOTAS, IBC National Convention

Speakers

Juan Migel Artigas Azas

Dr Roger Brousseau

Charles Clapsaddle

Devin Espinoza

Jose Gonzalez

Gerald Griffin

Chris Horsfall

Ad Konings

Mark Pyle

Markita Savage

Greg Steeves

—



Juan Miguel Artigas Azas

Sponsored by: **Pet's Palace, Louisville**

Swordtails of the Panuco – Rheophilous Cichlids from North America.

Juan Miguel Artigas Azas is a naturalist living in San Luis Potosí, Mexico. He has been passionate about fish ever since he can remember. Although his main

interest is in Central American fishes, he studies and is drawn to many other species and locales as well.

Creator and editor of the Cichlid Room Companion, Juan Miguel found his strengths in both the computer and natural worlds coincided with the internet revolution – this led to the vision of bringing them together in a website that could pass information to cichlid aficionados and scientists for years to come! Juan has found this never-ending project a commitment that he has been willing to maintain with fresh and invaluable scientific content uninterrupted for over 25 years.

Traveling to the natural habitats of the fish he loves, Juan Miguel obtains underwater pictures of them. He likes to observe them, trying to understand their natural history and relationships. He has managed to obtain a great knowledge of biology and the geographical distribution of the fishes in Mexico and Central America. This brings to his conferences originality and special interest aspect to a world of intricate behaviors and spectacular endemic species of the region.

Juan Miguel has written many articles on Mexican and Central American freshwater fish for several publications. He has also been honored with invitations as a lecturer at fish-oriented conventions in several countries, including Australia, Belgium, Canada, Germany, Mexico, Netherlands, Norway, France, Italy, Sweden, UK and the USA. Juan Miguel is also part of the American Cichlid Association – Zoo Med Speakers Program.

The Guy Jordan Retrospective Award, the maximum honor bestowed by the American Cichlid Association to people who have made extensive contributions to the international cichlid hobby, was awarded to Juan Miguel in 2008.





Dr Roger Brousseau

Sponsored by: **Clint Johnson**

Keeping and Raising South American Annual Killifish.

I currently live in Lincoln, CA (near Sacramento), I am married to my beautiful wife of 16 years, Adriana, who was born in Brazil

and I have one wonderful daughter, Ashley, who is 14. I started keeping killifish in 1979 at 18 and joined the AKA in 1980. I first started out breeding *Aphyosemion* species but I wasn't very good at it. I really liked killifish, so I didn't give up, I kept trying. I got a lot better at breeding non-annual fishes over the years but I wanted to try something different. Then, in 1983, I decided to start with annual killifish species. So I bought eggs of an African annual species, *Nothobranchius*, I was successful and really liked it. A year later I started breeding annuals from South America.

In 1984 I won Best in Show for my *Simpsonichthys boitonei* and was hooked on annuals from South America ever since. I went on my first collecting trip outside of the USA in 1987, to Venezuela. This was a great adventure for me and started my passion for collecting wild annual fishes in South America. Since then, I have traveled in search of killifish in Venezuela (4 times), Colombia (3), Brazil (16) and Bolivia (9). I wrote a book on South American Killifish, entitled: *A Hobbyist's Guide to South American Annual Killifish* in 1991 and updated it in 2007.

Most recently, I have co-authored four new species of killifish and have found many new species, so there are more to be described and many new ones to be discovered. I was fortunate to have found a new species in 2008 and in 2013 it was described after me by Dalton Nielson, *Spectrolebias brousseau*. In 2014, a new species I collected in 2011 was named after my daughter, *Papiliolebias ashleyae*.

In my fish room, I keep only South American annual fishes, and even though it isn't very big (55 aquariums), it keeps me busy. I really enjoy collecting and breeding South American annual killifish and I hope to inspire you as well!



Charles Clapsaddle

Sponsored by: **Clint Johnson**

Breeding Systems (for maintaining species/ varieties, improving and developing new varieties).

Charles began his fish-keeping career at about 6 (68 years ago) when he won some goldfish in a ping-pong toss at the Goliad County Fair. After growing them to adulthood, he

spawned them and was hooked on fish breeding forever. Shortly after this success with goldfish, he turned to locally collected native fish, *Gambusia affinis* (mosquito fish), *Poecilia latipinna* (sailfin molly), *Ameiurus nebulosus* (bullhead catfish), and various species of *Lepomis* (sunfish or perch). By junior high school, he had graduated to raising and selling fancy guppies in shops in Houston, which his dotting grandparents drove him 2-3 hours to. As a result of raising guppies, his fascination with livebearers continues today.

Charles paid his way through college raising killifishes and Bettas to earn a BSc in Zoology from The University of Texas at Austin. During his senior year, Charles and a partner bought a tropical fish shop in Austin and expanded it to two locations. Later, they sold the business, and Charles turned to pond-raising and wholesaling fish on his family's farm in Goliad County, Texas. He also experimented with recirculating systems using plant filtration.

Moving to Santa Fe, New Mexico in 1992 with wife Susie, they opened Santa Fe Tropical Fish, Inc, a greenhouse-based recirculating system raising rainbowfishes. In 2000, they bought the family farm in Goliad and moved the hatchery there, renaming the company Goliad Farms, Inc.

Charles continued to refine the systems and expanded the hatchery to three greenhouses covering 7500 sq.ft, holding 100,000 gallons of water. Although they breed and raise many other fishes, invertebrates, and plants, it's the development of new livebearer and cichlid strains and the improvement of existing strains that occupy his best efforts. Charles has spoken to aquarium clubs across the country on various topics relating to the hobby, his methods, and the farm's operations. He is a prolific writer on aquarium topics (see his blogs) and authored the livebearer column for *Tropical Fish Hobbyist* magazine for three years. Goliad Farms, Inc. has an active YouTube channel providing information on its breeding and culturing techniques and the greenhouses.





Devin Espinoza

Sponsored by: **Greater Cincinnati Aquarium Society**

The Wonderful World of Nothobranchius.

Devin is an integral member of the Texas Area Killifish Organization and one of the younger members of the AKA. "My love for aquatic life began in the small town of Iola, Texas. My

grandparents owned a small piece of land that had a quaint creek running through it. The aquatic life in that creek was diverse and plentiful. As a young boy, I spent countless hours exploring that creek. I would don my rubber boots and equip myself with a minnow net, enthusiastically curious about what I would find. I marveled at all the little fish and crustaceans I managed to catch."

"Eventually, I traded my rubber boots for a pair of combat boots when I enlisted in the Marines and traveled the world. Instead of finding beauty, I discovered just how much destruction humans could bring upon nature. Jungle streams full of trash, beaches, rivers, and marshes used as expedient dumps."

"Because of my travels I have witnessed wet markets full of fish and animals I have only seen in books. During my downtime, I would frequently seek out pet stores and live fish stores to see what they held. When I saw my first killifish I was stunned; it was like nothing I had ever seen before! Before me swam the stunning Golden Wonders, and from that moment on I was hooked, so much so that once I left the Marine Corps, I pursued a degree at Texas A&M in Ecology and Conservation Biology and took every ichthyology and wetland class they had to offer. During my time in college, I amassed a respectable fish room that held over 60 tanks and some 50 species of Killifish. I specialize in warmer water Killies like *Epiplatys* and my personal favorite *Nothobranchius*."



Jose Gonzalez

Sponsored by: **Clint Johnson**

Catching up with Madagascar Cichlids.

Grew up in central Mexico where I first fell in love with livebearers. My first successful spawning was from a female guppy followed by wild-caught *Godea atripinnis*

and *Xenotoca variata*. Many years would go by before my introduction to cichlids with the then-named *Cichlasoma salvini* (now *Trichromis salvini*).

I would later stumble on a specimen of *Paratilapia polleni* purchased in an auction at a fish meeting sometime in early-2000. My desire for venturing into Malagasy cichlids and killis was well on its way to developing into a full-blown addiction soon after.

Currently keep goodeids, killis from Mexico and Madagascar as well as cichlids from many parts of the world.

My interests in fishkeeping are driven by conservation and the same curiosity for the underwater life that has always captivated me since childhood.

2025 ACA, AKA, ALA, IBC National Convention

Bronze Sponsor

Jacob Blankenship



Best Wishes for the Most Successful Convention Ever

St Louis Area Killifish Association (SLAKA)

Welcome to the 2025 AKA Convention!

If you live in the greater St Louis Metro area,

Come join us!



We are comprised of a small group of Killifish enthusiasts.

Several of our members have been in the Hobby for a while and we enjoy passing tips learned over the years to our new members. The group is growing!

We would love to meet you in Saint Louis!



Contact Jack Heller
hellerjackl@aol.com

BEST WISHES FOR THE MOST SUCCESSFUL CONVENTION EVER

METROPOLITAN AREA KILLIFISH ASSOCIATION

MAKA

Contact:
webinfo.maka@gmail.com



Welcome Killifish Enthusiasts!

MAKA, organised in 1970, is an Affiliate Club of the American Killifish Association and one of the oldest specialty associations in the United States.

Meetings are generally held on the 4th Wednesday of each month (except 3rd Wednesday in November and December).



Meetings begin promptly at 8:00 pm with a discussion of club business, followed by a presentation and an auction of fish, eggs, plants and dry-goods.

Refreshments are served.





Gerald Griffin

Sponsored by: **Karen Haas**

Wild Betta Species – Overview of the New Wild Betta Standard.

I first started keeping fish at the age of nine and by 10, bred my first fish species *Colisa lalia*, followed shortly by *Colisa chuna (sota)*, *Colisa fasciata*

and *labiosa*. At the age of 12, I read *All About Bettas* by Walt Maurus and fell in love with wild bettas. The only problem was that in the 1970s, living in Oklahoma I could not find any. When I went to college, I found articles on wild bettas in the library, joined the International Betta Congress, started corresponding with fish keepers, found wild betta stocks and began collecting them and writing articles.

Around 2000, I once again got hit with the betta bug and started keeping domestics again. As soon as I did, the wild betta bug hit me again and I went crazy again collecting them. I currently run 80+ tanks dedicated to a number of fishes. As I became more involved in my local fish club, the Oklahoma City Aquarium Association, I started keeping a variety of species and have since spawned various barbs, African cichlids, killifish, native American fish, American cichlids, livebearers, and a number of miscellaneous fishes. I have recently diverged into saltwater fishes (clownfish and seahorses). However, wild bettas and anabantoids will always be my first love and the primary fish I keep.

I am currently chair of the Species Maintenance Program of the IBC and BAP chair of the Oklahoma Aquarium Association, Treasurer for the American Labyrinth Fish Association, and have also been President of the Oklahoma Aquarium Association's Tulsa Chapter, as well as their HAP and Presentations Chair.



Chris Horsfall

Sponsored by: **Janet Benes**

Sustain Nkondwe Island, Lake Tanganyika.

Chris is an entrepreneur, conservationist, and hospitality expert with nearly 40 years of experience. He is co-owner of Lake Shore Lodge on the pristine shores

of Lake Tanganyika, a renowned destination offering adventure activities and unique accommodations since 2007. Alongside his work in hospitality, Chris co-founded SUSTAIN Lake Tanganyika, a non-profit dedicated to conserving the lake's unique fish species and improving the livelihoods of local Tanzanians.

A passionate advocate for Lake Tanganyika's biodiversity, Chris leads the effort to protect the lake's famed cichlids from over-extraction. This includes the establishment of the 1000-meter no-fish, no-extraction zone around Nkondwe Island – the first protected area outside of a national park on the lake. Understanding the link between environmental conservation and human well-being, Chris's projects also aim to offer alternative livelihood opportunities for the local communities, helping to break their dependency on the lake for survival.

In addition to his conservation efforts, Chris is the co-owner of Tanganyika Aquahub, which further contributes to sustainable aquaculture practices in the region.

Christopher, a builder by trade, thrives on fixing things, problem-solving, and overcoming challenges. He believes in the power of positivity and possibility, driven by the mantra that adversity makes us stronger and that there's no such thing as a setback – only learning experiences.





Ad Konings

Sponsored by: **Daryl Hutchins**

(50 Years) Chasing Cichlids in Their Natural Habitat.

Ad Konings, born and raised in the Netherlands, started keeping cichlids at age 14. While he wanted

to be an ichthyologist, he felt his economic future would be more secure if he studied medical biology. As a young adult, he did human DNA research in Amsterdam and Rotterdam. In 1980, Ad worked for the Netherlands' top tropical fish importer, Dirk Verduijn.

The wealth of rare African cichlids available to him at this time greatly increased his fascination with these animals, especially after taking a trip with Verduijn to Malawi in 1980 to visit Stuart Grant's collecting and exporting operation. He has traveled there many times since.

He moved to Germany in 1986, and around this time, began working with Ethelwynn Trewavas, a prominent ichthyologist. As his knowledge grew, he began writing books about cichlids. In 1991, he started his own publishing company, Cichlid Press. He got married in 1996 in Malawi and the couple moved to sunny El Paso, Texas, taking Cichlid Press with them. The publishing company grew rapidly, and he has published books by other fish experts, besides his own.

Ad continues to travel to study and photograph cichlids and their habitats and remains active in cichlid research, often working with Dr Jay Stauffer of Penn State. He shares his knowledge in books and articles, and by giving talks. He has appeared at events in at least 24 countries.

A long-time friend of the ACA, Ad spoke at the first ACA ICC in Orlando, Florida, in 1989. He has spoken at many ACA conventions since then.



Mark Pyle

Sponsored by: **Brian Koester**

Building a better grow-out system.

Mark has had a lifelong passion for aquatic life. As a youngster he played in the creeks and streams of Pennsylvania catching all types of life forms. He has been keeping fish

for nearly three decades. His passion for nature turned into keeping and breeding fishes, primarily killifish. In the past five years he has focused on tropical killifish; breeding dozens of species with the help of experienced breeders in the AKA and TAKO. His fish have placed in numerous killie events.

"It all ties into my passion to educate people about the natural world. I have been keeping fish off and on for a long time. Once I realized how many myths there were about them and how few people kept them, it really triggered a desire to keep, learn and pass on that information."

In addition to killifish Mark has been keeping, studying, and teaching reptiles and amphibians for nearly 30 years. He is currently the President of the Dallas-Fort Worth Herpetological Society, a licensed falconer, a permitted wildlife rehabber and likes to tinker with electronics and computers.

2025 ACA, AKA, ALA, IBC National Convention

Bronze Sponsor

Anonymous





Markita Savage

Sponsored by: Patrick Miller

Xiphophorus Genetic Stock Center.

Markita began her employment with the Xiphophorus Genetic Stock Center as a Grant Specialist in 2005 and was promoted to Operational Manager in 2008.

Markita has since been in charge of all daily operations of the Stock Center including *Xiphophorus* species maintenance as well as maintenance of Japanese medaka (*Oryzias latipes*) lines housed at the center.

Prior to working at the Stock Center, Markita was a volunteer aquarist with the Dallas Zoo & Aquarium for four years where she was responsible for shark interaction, education, and feedings for the public.

Markita graduated from Texas State University with a B.S. in Marine Biology and also has a B.S. in Criminal Justice from University of North Texas.



Greg Steeves

Sponsored by: Clint Johnson

Banquet Presentation.

As a lifelong aquarist, Greg is widely known for his work with haplochromine cichlids from East Africa. Realizing that the fate of Lake Victoria and its fauna was uncertain

at best, a large fish room dedicated to spawning these cichlids eventually evolved. Subsequent breeding efforts mostly proved successful and Greg was able to encourage others to work with these fish by providing seed colonies and support. Several books, videos, and hundreds of magazine articles later, it is hoped that some of the knowledge gained through experience will assist other aquarists with their efforts to propagate East African cichlids and keep them available for other hobbyists to enjoy despite the sometimes dismal outlook these fish face in their natural ecosystems.

Working with Claudia Dickinson, Greg has helped form the CARES organization including CARES for Education at the Mountain Valley Middle School in Comal County, TX. He also initiated the conservation-minded Hill Country Cichlid Club and was convention chair of many shows and conventions. Other accolades include President of FOTAS for nearly a decade and recipient of the FOTAS Altruism Award in 2023. Greg has travelled extensively speaking about the fish he loves.

Since stepping away from physically maintaining a large number of aquaria, Greg has now realized what a twisted bunch of humans the aquarium hobby attracts. Still highly interested in fish, and the personalities of the wonderful people he has encountered along the way are also of great interest. There is a possibility that he will elaborate on this during his presentation at the Lone Star CARES Convention.





Just add water. We'll do the rest.™

Cichlid Nutrition

Designed to ensure your Cichlid's health



- ✓ Vitamin and Amino Acid Supplement
- ✓ Trace Elements for Cichlids
- ✓ Premium Cichlid Flakes Now With Probiotics

Seachem Laboratories, Inc. • 1000 Seachem Drive, Madison, GA 30650
888-SEACHEM • www.seachem.com

2025 ACA, AKA, ALA, IBC National Convention

Gold Sponsors



Greater Chicago
CICHLID ASSOCIATION

The Greater Chicago Cichlid Association (GCCA) is a place for cichlid hobbyists.

Guests are always welcome at our meetings.

Meetings generally are at 6PM on the second Sunday of the month, but there are exceptions, so please check our Events Calendar.

Each meeting is attended by 25-50 people typically. The meeting starts with a welcome from our President and some business affairs may be discussed. We usually ask if there are guests present. Raise your hand and tell us what kind of fish you keep!

Following business, there is a short break when you can meet other attendees, take a look at the fish that are available for sales, buy raffle tickets for aquarium goods and see the fish in our Bowl Show.

After the break, a speaker or other program is presented. We bring in speakers from all over the US and other countries. These speakers are usually an expert in cichlids or an aquarium-related topic. The talk usually lasts about an hour.

Following the talk, we announce the raffle winner and begin the auction of fish.

If you like cichlids, you should join the GCCA today.

Member Benefits

GCCA is the top cichlid club in the midwest.

We have over 200 members that range in age from 8 to 80!

We have top speakers at our monthly meetings.

The club sponsors many special events which you can find on our Calendar page:

Cichlid Auctions, Cichlid swap meets, Members-only field trips, Fishroom tours, Lending library of top cichlid books, Breeders Award Program: Earn points and plaques as you breed cichlids. Raffle at every meeting, A cichlid auction at every meeting.

A great way to get rare and hard to find fish.

gccanet.net



Lone Star CARES Convention Auction Guidelines

**An Auction will be held on Sunday
from 12:30 pm to 2:00 pm**

Buyers

- The AKA/ALA/ACA/IBC auctions are run together and you will need to settle your tab at the conclusion of the auction. Your convention registration number is your bidder number.
- If you have not registered for the convention you must register for the auction and there is no registration fee to buy. All buyers will be running a tab, you can pay cash, check (driver's license/phone number required), or credit card. (A credit card handling fee may be assessed).
- No items can be removed from the auction area until paid for and tabs settled.
- The AKA/ALA/ACA/IBC auctions will be held concurrently; one bag of killifish sold, then one bag of livebearers, then bag of cichlids, then one bag of bettas is sold until they are sold out.
- Items sold at the AKA auction are considered donations to the American Killifish Association.
- Returned checks will be assessed \$30.00 fee.
- When an item is sold, the runner will bring the item to the buyer and the buyer is required to sign the purchase slip.
- Know what you are bidding on. All items are available for inspection prior to the auction. Take the time to examine each item so you positively know what it is BEFORE you bid. Once an item is sold it cannot be returned to the auction to be resold.
- By registering to buy at the convention you are agreeing to Convention Auction Rules.

Sellers

Sunday Auction items must be fish only. Cichlids, livebearers, Killies and Bettas. All other fish can be auctioned, but must be 100% donation to the event.

Auction Splits for Respective Organizations:

American Killifish Association (AKA) are considered 100% donations to the AKA.

American Cichlid Associations (ACA) Sellers 70% ACA 30%.

American Livebearers Association (ALA) Sellers 70% ALA 30%.

International Betta Congress (IBC) Sellers 70% IBC 30%.

- All bags must be labelled properly: seller's name, email address or phone number, species name, quantity, sex (if sexable), and other information needed.

Examples:

JLW #1 <i>Altolamprologus calvus</i> "Zaire Black" F1 Breeding Pair	JLW #2 <i>Pseudotropheus saulosi</i> Qty: 6 unsexed	JLW #3 <i>Pundamilia nyererei</i> Makobe Island Male
--	---	---

- Fish not properly bagged will be assessed a \$2.00 fee.
- Sellers can use their three initials and bag number. (ABC-1, ABC-2)
- There is a limit of 50 items per seller and a limit of five (5) bags of any one species, color, or type.
- Items not sold will be considered donations.
- No dry goods in any of the auctions. Plants and Live food cultures are acceptable.
- Split checks are the responsibility of the respective organization and the Convention Committee bears no responsibility for the financial settlement between the seller and the respective organization.
- No minimum bids will be accepted.
- By registering to sell fish at the Convention Auction you are agreeing to abide by the auction rules.
- The auction committee has the right to refuse to sell items that are deformed, diseased, or in poor health.
- Sunday auction items must be fish only. Cichlids, livebearers, Killies and Bettas. All other fishes can be auctioned, but must be 100% donation to the event.

General


- Auctioneer's decision is final.
- All bidders must have a bidder's card to bid.
- Anyone may purchase items at the auction but they must register to receive a bidder's card.
- The Lone Star Cares Convention, The Lone Star Cares Convention Committee, the auctioneers, and the Marriott San Antonio Airport cannot be held responsible for accidents, or lost or stolen items.

ACA CLASSIFIEDS

YOUTUBE: [acaclassifieds.com](https://www.youtube.com/acaclassifieds)

FACEBOOK: [facebook.com/groups/acaclassifieds](https://www.facebook.com/groups/acaclassifieds)





The MUSEUM OF AQUARIUM & PET HISTORY

ONLINE NOW!!

Videos of hundreds of pet artifacts including antique aquariums, bird cages, fishbowls and stands, dog advertising, Chipmunk cages, vintage pet foods, medicines, &c.
Articles by current pet historians on Parlor Aquariums, Rare Aquarium Pumps, Vintage Trading Cards, Famous Bird Stores, History of reptile keeping, &c.
Rare and unusual aquariums, pet companies of yesteryear, crazy pet products, &c.

moaph.org

SUBSCRIBE & SAVE



Subscribe TODAY!

TO ORDER, GO TO www.AMAZONASmagazine.com
Don't miss a single issue!

Registration

Convention Registration includes exclusive access to the following:

- Entry to the main Fish Show with cichlids, livebearers, killifish and Bettas;
- Vendor and Manufacturer Booths featuring display, sales and promotional items;
- Goodie bag stuffed with great manufacturer and vendor giveaways;
- Presentations on topics relating to cichlids, livebearers, killifish and bettas, including travel, collecting, keeping and breeding by experts in the hobby and industry;
- The big Sunday Swap Meet with Vendors and Hobbyists who will be offering fishes, plants, equipment and dry goods for sale;
- Club-sponsored Hospitality Suite – Thursday, Friday and Saturday evenings;
- Option to register for special side events, including Thursday Fish Farm Tour and Friday Texas Native Fish Collecting Trips including The Xiphophorus Stock Center – limited space available, so reserve early!
- Option to register to the Saturday evening Banquet featuring a humorous Keynote Presentation by Greg Steeves.

This registration will get you in to:

All the speakers for the ACA, AKA, ALA and IBC Show;

The Hospitality Suite;

AKA George Maier Fund and ALA Vern Parish Fund wine and beer fundraiser;

ACA BABES Auction (late Friday night);

All of the side trips (extra cost); and

Any other convention-included programs.

Adults (18 and older): \$70 until May 1; thereafter \$75. **Youths** (13-17): \$30.

Children (12 and under): \$10.

Banquet Buffet \$66

Tomato, Cucumber, Fennel and Onion Salad or Traditional Caesar Salad with Anchovy Dressing

Grilled Beef Tenderloin and Seared Tilapia with Citrus Relish

Grilled Asparagus

Rosemary Roasted Potatoes

Crème Brûlée Cheesecake and Carrot Cake

Vegetarian option available upon request.

Banquet Speaker: Greg Steeves.

No Entry without a Banquet Ticket. Space is limited.



BEST WISHES FOR THE MOST SUCCESSFUL CONVENTION EVER

MICHIGAN KILLIFISH ASSOCIATION

MKA

aka.org/larea_Affiliates/mka/index.html



Meetings are held on the
1st Thursday of each month,
except July or August,
starting at 1:00 pm.

Come join us each month for
a special presentation and
auction.



BEST WISHES FOR THE MOST SUCCESSFUL CONVENTION EVER

SOUTHERN NEW ENGLAND KILLIFISH ASSOCIATION

SNEKA

sneka.org



*If you are interested in killifish,
you are welcome at our meetings.*

SNEKA serves the Boston, MA, Providence, RI and Hartford, CT triangle, but welcomes members from farther afield. SNEKA was founded as a way to get local killifish keepers together, trade fish and exchange information about keeping and breeding killies. We welcome experienced killie keepers as well as those just starting out.

We meet irregularly, every couple of months or so. We have no annual dues, but SNEKA members must maintain a membership of the AKA (American Killifish Association). Out meeting dues are either a pair of killifish (preferred), half-a-dozen juvenile killifish, a dozen killifish eggs, live plants, another killifish-related item, or \$5. Fish and other items auctioned at the end of the meeting. If you are interested in killifish, you are welcome at our meetings.

**To be notified of
upcoming meetings and
events, subscribe to our
email list.**



ACA Photo and Art Show

Photo Contest

Eligibility

The contest is open to all photographers, both amateur and professional. Photos must feature tropical fish in aquariums, natural habitats, or controlled environments.

AI-generated or heavily manipulated images are not eligible. Light editing for color correction, sharpening, or cropping is permitted. Only *original* work by the entrant is accepted.

Submission Requirements

CLASS 1 – Digital – Sponsor: Mo Devlin

Format: JPEG or PNG. A maximum of three entries per participant, **to be submitted by 6/2/25**. Each photo must include a photo title, and species name (if known).

Filename format *required*: LastName_FirstName_species_Title.jpg (E.G: Smith_Joe_Angel_GoldBeauty.jpg).

CLASS 2 – Printed – Sponsor: Mo Devlin

Maximum 3 entries per participant. Printed and framed. Minimum 5"x7" or comparable size; no maximum.

Entries can be emailed (except Print must be in attendance) to Mo Devlin (by 6/2/25) Mo@modevlin.com.

Judging Criteria

Technical Excellence (50%) – Focus, sharpness, lighting, and overall image quality.

Composition and Creativity (40%) – Framing, use of space, and artistic presentation. Unique angles and creative use of surroundings are encouraged.

Overall Impact (10%) – Photos that captivate viewers, tell a story, or evoke strong visual appeal.

Disqualification

Photos with visible watermarks, logos, or text overlays. Overly edited images that distort the natural appearance of the fish. Late submissions or failure to meet technical requirements.

Awards

1st, 2nd and 3rd Place;

Best in Show – Highest-scoring photo overall;

Best Composition – Awarded for artistic and creative framing;

Most Unique Species – Highlighting rare or unusual tropical fish;

Audience Favorite – Selected through public voting during the convention.

Art Contest

Art submitted must be created by an attendee of the convention and entered under their name. All entries must be entirely original – no clip art or other elements created by someone else may be used.

All submitted works are to be labelled:

- • • • •
- Title •
- Artist's name •
- Types of media used •
- Statement of the mood or message the piece is intended to convey. •
- • • • •

Class 3 – 2-Dimensional Art – Sponsor: Mo Devlin/Ted Judy

Originality (>20 pts)

Skill and Execution of Media (>20 pts)

Use of Design Elements (>25 pts)

Overall Composition (60 points)

Class 4 – 3-Dimensional Art – Sponsor: Mo Devlin/Janet Benes

Originality (>20 pts)

Skill & Execution of Media (>20 pts)

Use of Design Elements (>25 pts)

Overall Composition (60 points)

Class 5 – Wearable Art (T-shirts, hats, etc) – Sponsor: Mo Devlin/Janet Benes

Originality (>20 pts)

Appropriate for an item of clothing (>20)

Skill & Execution of Media (>20 pts)

Use of Design Elements (>25 pts)

Overall Composition (60 points)

Lone Star CARES Convention Joint Auction

General information

You cannot sell anything banned by state law.

This auction is for live aquatic animals, live plants and live food only. No dry goods or equipment will be excepted. This will be a joint association auction that shall be divided as follows:

A rare Killifish auction will start us off from 10:00 am until 10:30 am:

The general auction shall start at 10:30 am and run until all items are sold.

Everyone must check-in at the registration desk. Registration opens at 8:00 am.

For help with Preregistration email HCCCfish@gmail.com

General Auction Rules

- The AKA/ALA/ACA/IBC/HCCC and FOTAS auctions are being run together and you will need to settle your tab at the conclusion of the auction.
- Everyone must register at Auction.fish and join the Lone Star CARES convention 2025 auction prior to the event. You can find instruction in the following documentation. There is no registration fee to buy. All buyers will be running a running a tab, you can pay cash or credit card when settling you bill. (A credit card handling fee of 3% will be assessed).
- No items can be removed from the auction area until paid for and tabs settled.
- The AKA/ALA/ACA/IBC/HCCC and FOTAS auctions will be held concurrently; one bag of killifish (if any AKA killifish remain unsold) then one bag of live bearers, then bag of cichlids, then one bag of bettas is sold until they are sold out.
- Items sold at the AKA auction are considered donations to the American Killifish Association.
- When an item is sold, the runner will bring the item to the buyer.
- Know what you are bidding on. All items are available for inspection prior to the auction. Take the time to examine each item so you positively know what it is BEFORE you bid. Once an item is sold it cannot be returned to the auction to be resold.
- By registering to buy at the convention auction you are agreeing to Convention Auction Rules.

Buyers that wish to move up a fish can pay a bump fee of \$2 a bag to bump the bag the front of the auction. Paying the bump fee is not a guarantee of your winning bid. Only the item will move up in the auction.

Buyers and sellers will both be issued a Buyer's Registration Number at the registration table.

Sellers

Auction Splits for Respective Organizations:

- American Killifish Association (AKA) are considered 100% donations to the AKA
- FOTAS – Seller 70% FOTAS 30%
- American Cichlid Associations (ACA) – Sellers 70% ACA 30%
- American Live bearers Association (ALA) – Sellers 70% ALA 30%
- International Betta Congress (IBC) – Sellers 70% IBC 30%
- Hill Country Cichlid Club (HCCC) – Seller 70% HCCC 30%



ALL sellers must be registered with the convention prior to registering for the auction.

Each seller will be given color-coded dots for each lot. Each lot will then be placed on the corresponding table before the auction starts.

All lots must be registered in **Auction.fish** [Lonestar Cares Convention 2025](#) auction prior to the auction.

Sellers wishing to leave the auction prior to the end of the auction may sign up at the registration desk to have their funds mailed.

All bags must be labeled properly; seller's name, species name, quantity, sex (if sexable) and the **system-generated LOT number**.

Examples:

Lot # 56
John Smith
Altolamprologus calvus
ACA

Lot 12
Jose Garcia
Breeding Pair
Blue Guppies Qty 6
ALA

- Fish not properly bagged will be assessed a \$2.00 fee.
- There is a limit of 50 items per seller and a limit of 5 bags of any one species, color, or type.
- Items not sold will be considered donations.
- No dry goods in any of the auctions. Plants and Live food cultures are acceptable.
- Split checks are the responsibility of the respective organization and the Convention Committee bears no responsibility for the financial settlement between the seller and the respective organization.
- No minimum bids will be accepted.
- By registering to sell fish at the Convention Auction you are agreeing to abide by the auction rules.
- The auction committee has the right to refuse to sell items that are deformed, diseased, or in poor health.

Sunday auction items must be fish only. Cichlids, livebearers, Killifish and Bettas.

General

- HCCC Auctioneer has the decision is final.
- All bidders must have a bidder's card to bid. All bidders must check in at the registration desk and will be assigned a bidder card.
- Anyone may purchase items at the auction but they must register to receive a bidder's card.
- The Lone Star Cares Convention, The Lone Star Cares Convention Committee, the Auctioneers, and/or the Marriott San Antonio Airport cannot be held responsible for accidents or, lost or stolen items.

We highly advise you to take advantage of the system's ability to print your bag labels. If you do not have a printer we can print your label at the registration desk. It will be your responsibility to cut and affix your label to the proper bag.

We will make every effort to rectify any issues that occur during the auction. However, 99% of any issues that occur during the auction is because of improperly labeled bags.

If the issue cannot be fixed in a timely manner it could result in your items not being sold. *Please take care that your Lot Numbers are correct.*

Questions or problems with this Auction can be addressed by emailing HCCCfish@gmail.com.

Joint Auction Registration

Preregistration for Sellers

All Sellers need to preregister all lots to be sold.

Sellers need to check-in at the registration desk on arrival.

Registration will open at 8 am on Sunday.

Instructions for Seller Preregistration

Create your Auction.fish account

1. Create an account on [Auction.fish](#);
2. Create an account with your email and a new password, click **Create a New Account**;
3. Fill in the Sign-up form on [Auction.fish](#) and verify your email address;
4. Click the [Auctions Tab](#) and find **The Lone Star CARES 2025 Convention 2025**;
5. Read the Auction Rules, scroll to the bottom of the page and click **JOIN AUCTION**.

To Add your bags (LOTS)

1. Click **ADD LOTS**;
2. Add each bag that you are entering into the auction;
3. Lot Name is the type of fish or plant you are entering. Things like Male, Breeding Pair or Trio can be helpful in this space as well;
4. Click **Donation** if item is a donation only (**all lots for AKA must select Donation Tab**);
5. The Group Tab is for entering the club that you are representing.
 - Enter HCCC for Hill country cichlid Club,
 - Enter ACA for American cichlid Association,
 - Enter IBC for international betta congress,
 - Enter ALA for American Live bearer Association,
 - Enter AKA for American Killifish Association (**select Donation on all AKA lots**),
 - Enter FOTAS for Federation of Texas Aquarium Societies.
6. Enter All LOTS and Scroll down to the bottom of the page and Click **SAVE LOTS**.

Print Bag Labels

The system assigns the lot number for you. **Your bags MUST include the system assigned LOT NUMBER.** The easiest way to make sure your bags are labeled correctly is to print your labels from the system. If you do not have a printer we can print labels at the registration desk. You will be responsible for attaching your labels to the proper bag. Every effort will be made to help rectify problems during the auction. However improper labeling is 99% of issues with items arising during auctions and they may result in lots not being sold.

Print labels from the system

Click on print labels. Print your labels and affix them to your bags.

Hand-written labels MUST contain the following information

1. Your Name;
2. The Lot Name – This is the name of fish/plant you are offering. Things like Male, Trio, or Breeding Pair can be very helpful in this space;
3. The Club you are entering the auction under – ALA, IBC, FOTAS, HCCC, ACA or AKA;
4. **THE SYSTEM-ASSIGNED LOT NUMBER**;
5. You can find the System-Assigned Lot Number by clicking *View Invoice* and scrolling down. The # column is the lot number that needs to be clearly marked on the bag. You may also click to print labels and copy the information directly from the pdf file. This will make sure your information is accurate. My recommendation is to use the Print Label function instead of attempting to hand-write your labels.

Questions or problems, email: HCCCfish@gmail.com.



Auction site



2025 ACA, AKA, ALA, IBC National Convention

Gold Sponsors



Greater Chicago
CICHLID ASSOCIATION

History

In 1974, Ken Schultz, Jan Alm, Carlo Leon and Carl Lundquist met to form the Greater Chicago Cichlid Association (GCCA). After much discussion, a name for the organization was agreed upon, and Carlo was designated President, Jan, Vice-President and Ken, Treasurer.

Postcards and posters were printed announcing the formation of a Chicago area Cichlid group, and over 500 responses were received from interested hobbyists. As most respondents were from the north side and north-west suburban area, it was decided to hold the meetings in that area.

Jerry Lindquist, another hobbyist, had parents who were managing the International Motor Inn on North Mannheim Road. The club was able to use the Inn for meetings. In January 1975, the first meeting of the GCCA was held, with a large turn out of prospective members. The soon-to-be leading Cichlid group in the Great Lakes area was launched.

Club Facts

In 1989, club member Ed Higgins (representing the Montgomery Ward Foundation) presented a \$150,000 grant to help fund the Shedd Aquarium's new Oceanarium expansion.

The Greater Chicago Cichlid Association has met at six different locations since the club's conception.

Master breeder Milo Manden served as GCCA president for 12 years, from 1987-1998. This is the perfect example of someone who is truly dedicated to the hobby.

The GCCA is a member of the Federation of American Aquarium Societies.

Former club president Bob Matthews and his wife, club photographer extraordinaire Laura Matthews, have collected wild fish in Brazil. Many other members have collected fish around the world.

In 2006, GCCA hosted the American Cichlid Association Convention. Over 600 cichlid keepers from around the world joined us.

gccca.net

AQUEON
it's all about the fish.®



**Tank Care Made Simple.
Rely on Aqueon.**

Aqueon.com



@AqueonProducts

Aqueon and It's All About The Fish are registered trademarks of Central Garden & Pet Company.





ALA Show

The Convention Show is a great opportunity to show your fish. The entry fee is \$2 per fish regardless of how many fish you enter. The number of tanks is limited so it is strongly suggested that you register early. You do not need to list what fish you will be bringing since the tanks are flexible.

Show Rules

1. Entries must be registered by Friday May 15, at 10 pm.
2. All exhibits must be set up on either Friday, between 10:00 pm and 10:00 pm on Saturday. Entries may be removed after 8:00 pm on Saturday evening and must be removed by 11:00 am Sunday morning.
3. Tampering with any exhibit other than that which belongs to oneself is strictly forbidden. If an entry needs to be moved for any reason, the Show Committee will do so.
4. No extensions or early teardowns without prior permission of the Show Committee.
5. All exhibits will be under the full control of the Show Committee while in the show, they must remain there for the duration of the show
6. Items not claimed by 10:00 am on Sunday will become the property of ALA.
7. Neither the hotel, nor the American Livebearer Association, nor the host club will be held responsible for any loss or damage incurred during the show. Exhibitors do have a responsibility to be careful with water.
8. Exhibitors may choose to have their exhibits auctioned. The exhibitor is responsible to be sure that those fish are bagged and properly labelled after judging is completed.

ALA Show Classes

1. **Guppy – Male Solid Color Tail, Delta Tail;**
2. **Guppy – Male Variegated Color Tail, Delta Tail;**
3. **Guppy – Male Other Tail Types;**
4. **Guppy – Female;**
5. **Mollies – Domestic Varieties and Hybrids** – Color and/or finnage variations of either sailfin or shortfin type mollies;
6. **Mollies – Natural Species:** *Poecilia butleri*, *caucana*, *chica*, *gilli*, *gracilis*, *latipinna*, *mexicana*, *orri*, *petenensis*, *salvatoris*, *sphenops*, *velifera*, etc.;
7. **Swordtails – Domestic, Common Finnage** *Xiphophorus helleri*;

8. **Swordtails – Domestic, Fancy Finnage** *Xiphophorus helleri*;
9. **Swordtails – Wild type:** *Xiphophorus alvarezi*, *birchmanni*, *clemenciae*, *cortezi*, *continens*, *kallmani*, *malinche*, *mayae*, *mixei*, *montezumae*, *monticolus*, *multilineatus*, *nezahuacoyotl*, *nigrensis*, *pygmaeus*, *signum*, and *helleri* (with collection site information);
10. **Variatus and Platies – Domestic, Common Finnage** *Xiphophorus variatus* and *X. maculatus*;
11. **Variatus and Platies – Domestic, Fancy Finnage** *Xiphophorus variatus* and *X. maculatus*;
12. **Platies – Wild type:** *Xiphophorus andersi*, *couchianus*, *evelynae*, *gordoni*, *milleri*, *meyeri*, *xiphidium*, and *variatus* and *maculatus* (with collection site information);
13. **Limias** – *caymenensis*, *dominicensis*, *melanogaster*, *miragoensis*, *nigrofasciata*, *ornata*, *perugiae*, *sulfurophila*, *tridens*, *versicolor*, *vitatta*, *zonata*, etc;
14. **All other Poeciliid species** – *Alfaro*, *Belonesox*, *Brachyrhaphis*, *Carlhubbisia*, *Cnesterodon*, *Flexipinnis*, *Gambusia*, *Girardinus*, *Heterandria*, *Heterophallus*, *Neoheterandria*, *Phallichthys*, *Phallocerous*, *Poecilia* (other than guppies and mollies listed above), *micro-Poecilia*, *Poeciliopsis*, *Priapella*, *Priapichthys*, *Pseudopoecilia*, *Quintana*, *Scolichthys*, *Xenophallus*, etc;
15. **Goodeids – Torpedo Body Shape** *Allodontichthys*, *Allotoca*, *Ataenobius*, *Characodon*, *Girardinichthys*, *Goodea*, *Ilyodon*, *Xenotaenia*, etc;
16. **Goodeids – Deep Body Shape** *Allophorus*, *Ameca*, *Chapalichthys*, *Skiffia*, *Xenophorus*, *Xenotoca*, *Zoogoneticus*, etc;
17. **All Other Livebearers** – Halfbeaks (*Dermogenys*, *Nomorhamphus*, *Hemirhamphodon*, *Zenarchopterus*, etc.), *Anableps*, *Jenynsia*, *Stingrays*, etc;
18. **Pairs Class** – Livebearers only male and female of the same species;
19. **Family Class** – Livebearers parents and 10 or more fry under three months old. The fishes must have been bred by the exhibitor;
20. **Photography Class:**
 - a. Judging will be based on art, technical skill, and the ability of the judge to identify the subject fish.
 - b. No photos of photographs will be allowed.
 - c. All prints must be of a living animal.
 - d. All entries must have been taken by the exhibitor.
 - e. Digital prints should be as close to the original image as possible, (non-manipulated). These are photographic images that haven't been wildly altered from the originals with software tools (like Photoshop, Illustrator etc.), prior to printing or scanning. Exhibitors may use these computer editing tools to adjust for contrast, exposure, cropping and other traditional adjustments that could be obtained through a traditional darkroom process. Only basic image corrections such as sharpening, saturation, cropping, color balance and removal of dust, scratches or water spots is allowed.
 - f. All photos need to be submitted digitally to webmaster@livebearers.org by Friday, June 13, at 5pm. Digital images will be displayed on a TV/Computer screen that will not be less than 21". Files should be in PDF format and not more than 30 MB.



- g. Nothing should be on the photograph that would identify the photographer.

Chairman's Award "most points";

Joanne Norton Award "Best domestic";

Frances Hubbs Miller Award "Best Goodeid";

Robert Rush Miller Award "Best Wild-type" (other than Goodeid).

Judging

IFGA show standards will be used for guppy classes, ALA show standards will be used for fancy *Xiphophorus* classes, and for wild species and cultivated strains of *Poecilia sphenops*, *P. latipinn*, and *P. veifera*.

Show standards can be found at:

livebearers.org/programs/show-standards

1. Judging will take place on Saturday morning. No unauthorized people will be permitted in the show room during the judging. The show room will be open to the public on Saturday after completion of the judging.
2. Decisions for the awards will be final and not subject to appeal.
3. Classification and size of fishes to be determined by references chose by the Show Committee.
4. Photography Class: judging will be based on art, technical skill, and the ability of the judge to identify the subject/s.

No photos of photographs will be allowed. All prints must be of a living animal. All entries must have been taken by the exhibitor.

Digital prints should be as close to the original image as possible (non-manipulated). These are photographic images that haven't been wildly altered from the originals with software tools (like Photoshop, In-Design, Illustrator, etc), prior to printing or scanning. Exhibitors may use these computer editing tools to adjust for contrast, exposure, cropping and other traditional adjustments that could be obtained through a traditional darkroom process. Only basic image corrections such as sharpening, saturation, cropping, color balance and removal of dust, scratches or water spots are allowed.

All photos should be at 5"x7" or larger. Title of the print or fish identification should be clearly marked on the back of the image or mount. Nothing should be on the photograph that would identify the photographer.

It is suggested that the prints be mounted on stiff backing or matted but it is not required.

Equipment

1. **Containers:** All non-photography entries will be displayed in flat-sided containers. The ALA will have approximately 150 tanks for use by entrants. These are on a first-come, first-served basis. All containers should be bare. Plants or decorations are not recommended.

2. **Air:** ALA will provide air to within four feet of all exhibits. Exhibitors are to supply their own tubing, and airstones. Sponges and box filters are optional. There will be no open airlines. There should be an air outlet with four feet of all tank locations.
3. **Stand:** Tables will be provided for all exhibit tanks up to 2.4 gallons. Exhibits over 2.5 gallons will be required to provide their own stands and tanks. If you need a tank larger than 2.5 gallons you must make prior arrangements with the Show Committee. Exhibits are not permitted to sit on the floor.
4. **No lights or reflectors** are required.
5. **Covers:** All exhibits are to have full covers.
6. **Heaters:** The show area is normally maintained at a minimum of 70°F. Heaters are not permitted.
7. **Water:** The host committee will ensure all supplied tanks will have dechlorinated city water at room temperature.

NO SPRAY-TYPE WINDOW CLEANERS PERMITTED IN THE SHOW

AquaFindr

Supporting Your Local Club with Every Sale

Strengthen Your Communities
 AquaFindr donates 10% of our profits to the local fish clubs of our users.

Easy Search and Sort Features
 Our advanced tagging system allows sellers to categorize products by species, care level, size, temperament, and more to connect you with your ideal buyers.

Flexibility and Growth
 AquaFindr grows with you. Choose the membership plan that works best for you—getting started is free!

No Hidden Fees
 Enjoy peace of mind thanks to AquaFindr's transparent pricing. We want you to feel comfortable selling with us, which means telling you exactly what you can expect to pay. No sneaky hidden costs—ever.

Get started for free
AquaFindr.com



PLEASE SUPPORT CONVENTION SPONSORS



2025 ACA, AKA, ALA, IBC National Convention

Gold Sponsors



Prestige Aquatics is a full aquatic services business in Paducah, Kentucky, USA. We are striving to be the aquatic fish industry leader in both livestock supply and aquarium services.

We are passionate about the fish keeping hobby because just like many of you, we have been hobbyists for most of our lives. Fish keeping is what we love to do!

Our mission is to provide high-quality, healthy, premium-grade fish directly to fish stores and home aquarium hobbyists, as well as equip them with the systems necessary for long-term success.

At Prestige Aquatics, we specialize in:

Rainbowfish – Plecos – Corydoras

Show-quality fancy guppies

Small South and Central American cichlids
and more!

Nearly every fish sold at Prestige Aquatics is bred and raised in-house at our Kentucky facility.

prestigeaquaticsfish.com



**Bluegrass Fish Keepers Association
and the
Louisville Tropical Fish Fanciers
invite you to
the next combined convention
for the
American Cichlid Association
and the
American Livebearer
Association**



BLUE GRASS BASH

in Lexington, Kentucky

June 25-28, 2026

Save the Date!



ALA CLASS SPONSORS

1. Guppy – Male Solid Color Tail, Delta Tail.	Rit Forcier
2. Guppy – Male Variegated Color Tail, Delta Tail.	James Schroeder
3. Guppy – Male other tail types.	Robert Sturnfield
4. Guppy – Female.	Val Hutchins
5. Mollies – Domestic Varieties and Hybrids – Color and/or finnage variations of either Sailfin or Shortfin-type Mollies.	Tim Habiger
6. Mollies – Natural Species: <i>Poecilia butleri</i> , <i>caucana</i> , <i>chica</i> , <i>gilli</i> , <i>gracilis</i> , <i>latipinna</i> , <i>mexicana</i> , <i>orri</i> , <i>petenensis</i> , <i>salvatoris</i> , <i>sphenops</i> , <i>velifera</i> , etc.	James Schroeder
7. Swordtails – Domestic, Common Finnage <i>Xiphophorus helleri</i> .	Breeder Award Program
8. Swordtails – Domestic, Fancy Finnage <i>Xiphophorus helleri</i> .	Species Conservation Award Program
9. Swordtails – Wild-type <i>Xiphophorus alvarezii</i> , <i>birchmanni</i> , <i>clemeniae</i> , <i>cortezi</i> , <i>continens</i> , <i>kallmani</i> , <i>malinche</i> , <i>mayae</i> , <i>mixei</i> , <i>montezumae</i> , <i>monticolus</i> , <i>multilineatus</i> , <i>nexahuacoyoti</i> , <i>nigrensensis</i> , <i>pygmaeus</i> , <i>signum</i> , and <i>helleri</i> (with collection site information).	Rusty Wessel
10. Variatus and Platies – Domestic, Common Finnage <i>Xiphophorus variatus</i> and <i>X. maculatus</i> .	James Schroeder
11. Variatus and Platies – Domestic, Fancy Finnage <i>Xiphophorus variatus</i> and <i>X. maculatus</i> .	James Schroeder
12. Platies – Wild-type: <i>Xiphophorus andersi</i> , <i>couchianus</i> , <i>evelynae</i> , <i>gordoni</i> , <i>milleri</i> , <i>meyeri</i> , <i>xiphidium</i> , and <i>variatus</i> and <i>maculatus</i> (with collection site information).	Rich Serva
13. Limias – <i>caymenensis</i> , <i>dominicensis</i> , <i>melanogaster</i> , <i>miragoensis</i> , <i>nigrofasciata</i> , <i>ornata</i> , <i>perugiae</i> , <i>solfurophila</i> , <i>tridens</i> , <i>vericolor</i> , <i>vitatta</i> , <i>zonata</i> , etc.	Rick Bornstein
14. All other Poeciliid species: <i>Alfaro</i> , <i>Belonesox</i> , <i>Brachyrhaphis</i> , <i>Carlhubbsia</i> , <i>Cnesterodon</i> , <i>Flexipinnis</i> , <i>Gambusia</i> , <i>Cirardinus</i> , <i>Heterandria</i> , <i>Heterophallus</i> , <i>Neoheterandria</i> , <i>Phallichthys</i> , <i>Phallocerous</i> , <i>Poecilia</i> (other than guppies and mollies listed above), <i>micro-Poecilia</i> , <i>Poeciliopsis</i> , <i>Priapella</i> , <i>Priopichthys</i> , <i>Pseudopoecilia</i> , <i>Quintana</i> , <i>Scolichthys</i> , <i>Xenophallus</i> , etc.	Pat Hartman
15. Goodeids – Torpedo Body Shape <i>Allodontichthys</i> , <i>Allotoca</i> , <i>Ataenobius</i> , <i>Characodon</i> , <i>Girardinichthys</i> , <i>Goodea</i> , <i>Ilyodon</i> , <i>Xenotaenia</i> , etc.	Karen Haas

16. Goodeids – Deep Body Shape <i>Alloophorus</i> , <i>Ameca</i> , <i>Chapalichthys</i> , <i>Skiffia</i> , <i>Xenophorus</i> , <i>Xenotoca</i> , <i>Zoogoneticus</i> , etc.	Bowling Green State University (BGSU)
17. All other Livebearers: Halfbeaks (<i>Dermogenys</i> , <i>Nomorhamphus</i> , <i>Hemirhamphodon</i> , <i>Zenarchopterus</i> , etc), <i>Anableps</i> , <i>Jenynsia</i> , <i>Stingrays</i> , etc.	The Greater Akron Aquarium Society
18. Pairs Class – Livebearers only male and female of the same species.	Curt Bitterling
19. Family Class – Livebearer parents and 10 or more fry under three months old. The fishes must have been bred by the exhibitor.	Rich Serva
20. Livebearer photography.	Lee Newman
Chairman's Award "most points"	Blue Grass Fish Keepers Association
Joanne Norton Award "Best domestic"	Mike Schadle
Frances Hubbs Miller Award "Best Goodeid"	NAGWG
Robert Rush Miller Award "Best Wild-type" (other than Goodeid)	Louisville Tropical Fish Fanciers



ALL 325+ editions of the
Buntbarsche
Bulletin
at your fingertips!

Get your USB from the ACA booth at the Convention,
 or via the [ACA Online Store](#).





AMERICAN KILLIFISH ASSOCIATION SHOW CLASSES

CLASS	SPONSOR
1 – New World Non-annuals (except Rivulins)	Rusty Wessel
2 – <i>Rivulus</i> (Rivulins)	Matt Mills
3 – South American Annuals	Karen Haas
4 – <i>Nothobranchius</i>	Rick Ivek
5 – <i>Fundulopanchax</i> (except <i>Paraphyosemion</i>)	Mark Pyle
6 – <i>Fundulopanchax</i> (<i>Paraphyosemion</i>)	Kenneth Simolo
7 – Blue Gularis	Leonardo dePalma
8 – <i>Mesoaphyosemion</i> (except <i>Calliurum</i>)	Rick Ivek
9 – <i>Mesoaphyosemion</i> (<i>Calliurum</i>)	Rick Ivek
10 – <i>Chromaphyosemion</i>	Rick Ivek
11 – <i>Archiaphyosemion</i> , <i>Scriptaphyosemion</i> , <i>Nimbapanchax</i>	Rick Ivek
12 – <i>Aphyosemion</i> (all others)	Rick Ivek
13 – <i>Epiplatys</i>	Rick Ivek
14 – All Other Old World	Fritz Bazeley
15 – Matched Breeding Pairs	Rick Ivek
16 – Photography (Killifish theme) – digital	Rick Ivek
17 – Artwork (Killifish theme)	Sarah Walker

AKA SPECIAL AWARDS

	AWARDED BY
Tom Cahalan Award – Best in Class XI	AKA
Horst Latzel Award – Best Foreign Entry	AKA
Werner Award – Best Photographic Entry	AKA
Robert Felmey Award (KEY) – Killifish Exhibitor of the Year	AKA KEY Committee
Jorgen Scheel Award (KHY) – Killifish Hobbyist of the Year	AKA KHY Committee
Jubb Award – Best <i>Nothobranchius</i>	Long Island Killifish Association
Bill Jacobs Award – Best Classic Killifish	the Long Island and Metropolitan Area Killifish Associations
Walter Indell Award – Best <i>Epiplatys annulatus</i>	Tropical Fish Society of Rhode Island
Lee Harper Award – Best <i>Austrolebias</i>	Mid Atlantic Killie Organization
Robert Finch Award – Best <i>Aphyosemion australe</i>	Mid Atlantic Killie Organization
Best in AKA Award –	Finspiration Aquatics



AKA Endangered Fish List

U.S. Endangered Species Act (ESA). No killifish species are presently listed by CITES. There are, however, numerous species listed at the national level by the ESA as endangered or threatened and which constitute prohibited species in the context of AKA programs. These species are as follows:

Name	Status
<i>Crenichthys baileyi baileyi</i>	Endangered
<i>Crenichthys baileyi grandis</i>	Endangered
<i>Crenichthys nevadae</i>	Threatened
<i>Crenichthys bovinus</i>	Endangered
<i>Crenichthys diabolis</i>	Endangered
<i>Crenichthys elegans</i>	Endangered
<i>Crenichthys macularius</i>	Endangered
<i>Crenichthys nevadensis mionectes</i>	Endangered
<i>Crenichthys nevadensis pectoralis</i>	Endangered
<i>Crenichthys radiusus</i>	Endangered
<i>Empetrichthys latos</i>	Endangered

**YOU DON'T NEED TO TRAVEL
TO SEE THE WORLD!**

Bring a Little Piece of the World Home

Ask your local pet store for Segrest Inc. companion animals, we can help provide that little piece of the world and the comfort that comes with it.

Segrest Inc.

Texas Invasive, Prohibited and Exotic Aquatic Species

The organisms listed here are legally classified as exotic, harmful, or potentially harmful. No prohibited species will be allowed in the shows, auction, sales/rental tanks, or otherwise in the vicinity of the convention.

Note: scientific classification has changed for some species.

Fish

Air sac catfishes, Family Heteropneustidae: All species.

African Lute Fishes, Family Citharinidae, subfamily Distichodontinae: All species of genera *Belonophago*, *Euganthichthys*, *Ichthyborus*, *Mesoborus*, *Phago*, and *Paraphago*.

African Pike Fishes, Family Hepsetidae: All species.

African Tiger Fishes, Family Alestiidae: All species of genus *Hydrocynus*.

Arapaima, Family Osteoglossidae: *Arapaima gigas* (Arapaima).

Asian Pikeheads, Family Osphronemidae: All species of the genus *Luciocephalus*.

Carp and Minnows, Family Cyprinidae: All species and hybrids of species of genera: *Aspius*, *Pseudoaspius*, *Aspiolucius* (asps), *Abramis*, *Blicca*, *Megalobrama*, *Parabramis* (Old World breams), *Hypophthalmichthys* (bighead, silver, and largescale carp), *Mylopharyngodon* (black carp), *Ctenopharyngodon* (grass carp), *Cirrhinus*, *Thynnichthys*, and *Gibelion* (catla), *Leuciscus* (European daces), *Tor* and *Neolissochilus* (barbs and mahseers), *Rutilus* (roaches), *Scardinius* (rudds), *Elopichthys* (yellowcheek), *Catlocarpio* (giant barb), *Labeo* (sharkminnows) except *Labeo chrysophekadion* (black sharkminnow), *Pseudorasbora parva* (stone moroko).

Dogtooth characins (Payara and vampire tetras), Family Cynodontidae: All species of genera *Hydrolycus*, *Rhaphiodon* and *Cynodon*.

Dourados, Family Characidae: All species of genus *Salminus*.

Electric Eels, Family Electrophoridae: *Electrophorus electricus*.

Electric Catfishes, Family Malapteruridae: All species.

European and Asian catfishes, Family Siluridae: *Silurus glanis* (Wels catfish).

Freshwater Eels, Family Anguillidae: All species except *Anguilla rostrata* (American eel).

Freshwater Sleepers, Family Odontobutidae: *Percottus glenii* (Amur sleeper).

Freshwater Stingrays, Family Potamotrygonidae: All species.

Lampreys, Family Petromyzontidae: All species except *Ichthyomyzon castaneus* (chestnut lamprey) and *I. gagei* (Southern brook lamprey).

Marine Stonefishes, Family Scorpaenidae: All species of genera *Choridactylus*, *Dampierosa*, *Erosa*, *Inimicus*, *Leptosynanceia*, *Minous*, *Pseudosynanceia*, *Synanceia* and *Trachicephalus*.

Nile Perch, Family Centropomidae: All species of genus *Lates*.

Pike Killifish, Family Poeciliidae: *Belonesox belizanus*.

Perch, Family Percidae:
All species of the genus *Sander* (pikeperches) except *Sander canadensis* (sauger) and *S. vitreus* (walleye) and hybrids between those two species.
All species of the genus *Gymnocephalus* (European ruffes): *Perca fluviatilis* (European perch, also called redfin).

Piranhas, Family Characidae: All species of genera *Catopryon*, *Pristobrycon*, *Pygocentrus*, *Pygopristis* and *Serrasalmus* (closely related Dourados also prohibited; see above).

Round Gobies, Family Gobiidae: All species of genus *Neogobius*.

Seatrouns and Corvinas, Family Sciaenidae: All species of genus *Cynoscion* except *Cynoscion nebulosus* (spotted seatrout), *C. nothus* (silver seatrout), and *C. arenarius* (sand seatrout).

Snakeheads, Family Channidae: All species.

South American Parasitic Candiru Catfishes, Family Trichomycteridae: All species.

South American Pike Characids, Family Ctenoluciidae: All species of genera *Ctenolucius* and *Boulengerella*.

South American Pike Characoids, Family Acestrorhynchidae: All species of genus *Acestrorhynchus*.

Swamp Eels, Rice Eels or One-Gilled Eels, Family Synbranchidae: All species.

Temperate Basses, Family Moronidae: All species except *Morone saxatilis* (striped bass), *M. chrysops* (white bass) and *M. mississippiensis* (yellow bass) and hybrids of these three species.

Temperate Perches, Family Percichthyidae: All species.

Tilapia, Family Cichlidae: All species of genera *Coelotilapia*, *Coptodon*, *Heterotilapia*, *Oreochromis*, *Pelmatotilapia*, *Sarotherodon* and *Tilapia*.

Trahiras or South American Tiger Fishes, Family Erythrinidae: All species.

Walking Catfishes, Family Clariidae: All species.

Whale Catfishes, Family Cetopsidae: All species.

Shellfish

Applesnails, Family Ampullariidae: All species of the genus *Pomacea*, except *Pomacea bridgesii* (spiketop applesnail).

Giant Ram's-horn Snails, Family Ampullariidae: All species of genus *Marisa*.

Mittencrabs, Family Varunidae: All species of genus *Eriocheir*.

Mudsnails, Family Hydrobiidae: All species.

Mussels, Family Mytilidae: *Limnoperna fortunei* (golden mussel).

Oysters, Family Ostreidae: All species except *Crassostrea rhizophorae* (mangrove oyster), *C. virginica* (Eastern oyster), *Dendostrea frons* (frond oyster), *Ostrea stentina* (dwarf oyster), and *O. permollis* (sponge oyster).

Penaeid Shrimp, Family Penaeidae: All species of genera *Penaeus*, *Litopenaeus*, *Farfantepenaeus*, *Fenneropenaeus*, *Marsupenaeus* and *Melicerus* except *Litopenaeus setiferus* (white shrimp), *Farfantepenaeus aztecus* (brown shrimp) and *F. duorarum* (pink shrimp).

Southern hemisphere freshwater crayfishes, including redclaw crayfish, Family Parastacidae: All species.

Zebra and Quagga Mussels, Family Dreissenidae: All species of genus *Dreissena*.

Aquatic Plants

African Elodea (also called Lagarosiphon), Family Hydrocharitaceae: *Lagarosiphon major* (African elodea, Oxygen-weed).

Alligatorweed, Family Amaranthaceae: *Alternanthera philoxeroides*.

Ambulia, Family Plantaginaceae: *Limnophila sessiflora* (Asian marshweed).

Brazilian Peppertree, Family Anacardiaceae: *Schinus terebinthifolius*.

Dotted Duckweed, Family Araceae: *Landoltia punctata*.

Duck-lettuce, Family Hydrocharitaceae: *Ottelia alismoides*.

Eurasian Watermilfoil, Family Haloragaceae: *Myriophyllum spicatum*.

Exotic Bur-reed, Family Typhaceae: *Sparganium erectum*.

False Pickerelweeds, Family Pontederiaceae: All species of genus *Monochoria*.

Floating hearts, Family Menyanthaceae: *Nymphoides cristata* (crested floating heart), *N. peltata* (yellow floating heart).

Hydrilla, Family Hydrocharitaceae: *Hydrilla verticillata*.

Paperbark (Melaleuca), Family Myrtaceae: *Melaleuca quinquenervia*.

Purple Loosestrife, Family Lythraceae: *Lythrum salicaria*.

Salvinia, Family Salviniaceae: All species of genus *Salvinia*, including but not limited to *Salvinia molesta* (Giant salvinia) and *Salvinia minima* (Common salvinia).

Torpedograss, Family Poaceae: *Panicum repens*.

Water Hyacinths, Family Pontederiaceae: *Eichhornia crassipes* (Floating water hyacinths) and *Eichhornia azurea* (Rooted water hyacinths).

Water Lettuce, Family Araceae: *Pistia stratiotes*.

Water Spinach, Family Convolvulaceae: *Ipomoea aquatica* (Ong choy, Rau mong, Kangkong).

Wetland Nightshade, Family Solanaceae: *Solanum tampicense* (Aquatic soda apple).



LONG ISLAND KILLIFISH ASSOCIATION

Lika is an affiliate club of the American Killifish Association (AKA) devoted to the keeping breeding and dissemination of information on killifish.

For more information contact Dan Katz.



DanKatz117@gmail.com

Join us each
month for
a special
presentation and
auction.



THE LEADING MAGAZINE FOR
AQUARIUM HOBBYISTS SINCE 1952

ACA SPECIAL
6 BIG ISSUES **\$19.99**
OF
TROPICAL FISH



SUBSCRIBE TODAY!

ONLINE ORDERS ONLY * ENTER PROMO CODE ACA 2018

FREE SHIPPING FOR U.S. ORDERS ONLY

WWW.TFHMAGAZINE.COM



BEST WISHES FOR THE MOST SUCCESSFUL CONVENTION EVER



TEXAS AREA KILLIFISH ASSOCIATION TAKO

tako.aka.org

TAKO IS A GROUP OF FISH ENTHUSIASTS WHOSE PRIMARY FOCUS IS THE MAINTENANCE, BREEDING AND SHARING OF KILLIFISH.

Our meetings, either at a member's home or via Zoom, are free of charge and open to any fish fanatics. We primarily serve Texas and the South-west, with members currently scattered across the USA.

• There are no dues to membership; only an interest in killifish and friendships.

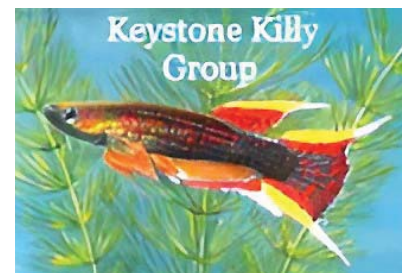
• Meetings are normally held at member's homes or via Zoom since the pandemic, usually with a fish room tour, a presentation and a club-supporting auction, wherein killies, other species of fish, plants, foods and assorted aquarium-related paraphernalia are auctioned with all proceeds going to the club to support future shows, speaker travel expenses, room rentals for shows, etc.



**Texas
Area
Killifish
Organization**

BEST WISHES FOR A SUCCESSFUL CONVENTION

MID ATLANTIC KILLIFISH ORGANIZATION MAKO



Established by the merger of the CAKC and KKG.

Meetings are held at 1:00 pm on the 2nd Saturday of each month except July, August and December.

For details see the
Mid Atlantic Killifish Organization
Facebook page.



MAKO Sponsors these Awards:

Best *Aphyosemion australe* – Bob Finch Award

Best *Mesoaphyosemion (calliurum)*

Best *Austrolebias* – Lee Harper Award



Wisconsin Area Killifish Organization

Invites you to our 43rd Annual

Egg-Laying Toothcarp Jamboree

Nov. 1-2, 2025



Held at: COMFORT SUITES

Milwaukee Airport, 6362 S. 13 St. Oak Creek, WI

Phone: **414-570-1111**

(Same hotel as past 4 years.)

Discount Code: WI Killifish

On-line pre-registration, 60/40 split, Mail-ins,

Proxies, AKA Sanctioned, Box Sales, Trophies.

Saturday Featured speaker: To be determined.

Hospitality, Live Foods, Publications, Sales Table,

Raffle, Silent Auction, Large display of Killifish

and of course, great people!

Sunday:

Awards Presentation

followed by a huge AUCTION of Killifish and Plants.

More info: wako.aka.org

(GasiorGJ@aol.com)

NOTES:

This image shows a full page of primary-ruled paper. It features multiple sets of horizontal lines designed for handwriting practice. Each set consists of a solid top line, a dashed midline, and a solid bottom line. The entire page is filled with these repeating patterns from top to bottom, providing ample space for writing practice. There are no margins, text, or other markings on the page.

JOIN!

Please take a moment to join:

ACA

American Cichlid Association

AKA

American Killifish Association

ALA

American Livebearer Association

FOTAS

Federation of Texas Aquarium Societies

IBC

International Betta Congress